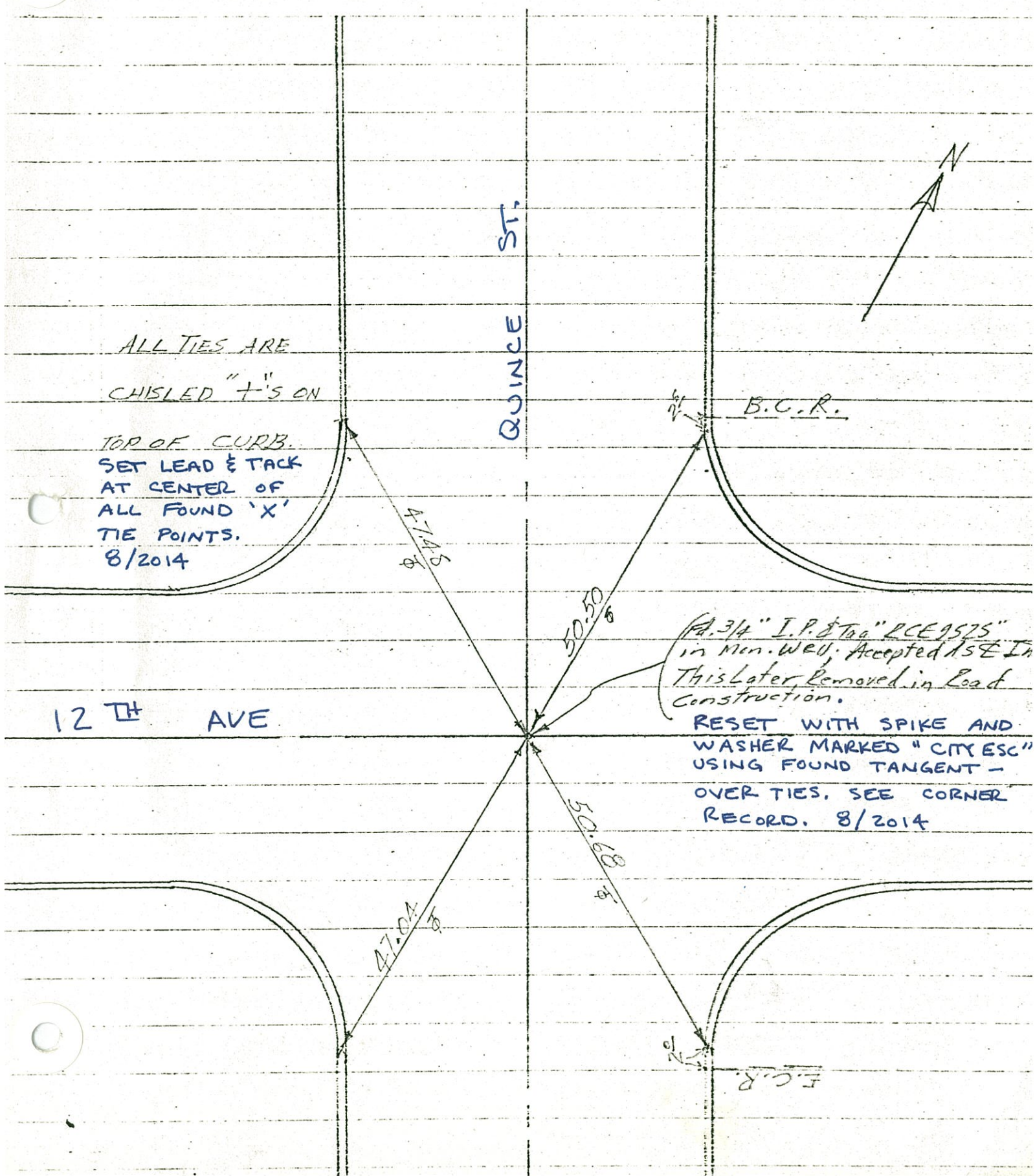


E INTERSECTION LIES  
QUINCE & 12<sup>TH</sup> AVE

JAN. 2, 1980  
CARLSON  
HIGBEE

299



ALL TIES ARE  
CHISELED "+S ON

TOP OF CURB.  
SET LEAD & TACK  
AT CENTER OF  
ALL FOUND 'X'  
TIE POINTS.  
8/2014

12<sup>TH</sup> AVE

QUINCE ST.



B.C.R.

1/4" I.P. & Tag "DCE9575"  
in Min. Well. Accepted 15' In  
This Later Removed in Load  
Construction.

RESET WITH SPIKE AND  
WASHER MARKED "CITY ESC"  
USING FOUND TANGENT -  
OVER TIES. SEE CORNER  
RECORD. 8/2014

F.C.R.