



CITY OF ESCONDIDO
CENTERLINE INTERSECTION TIES

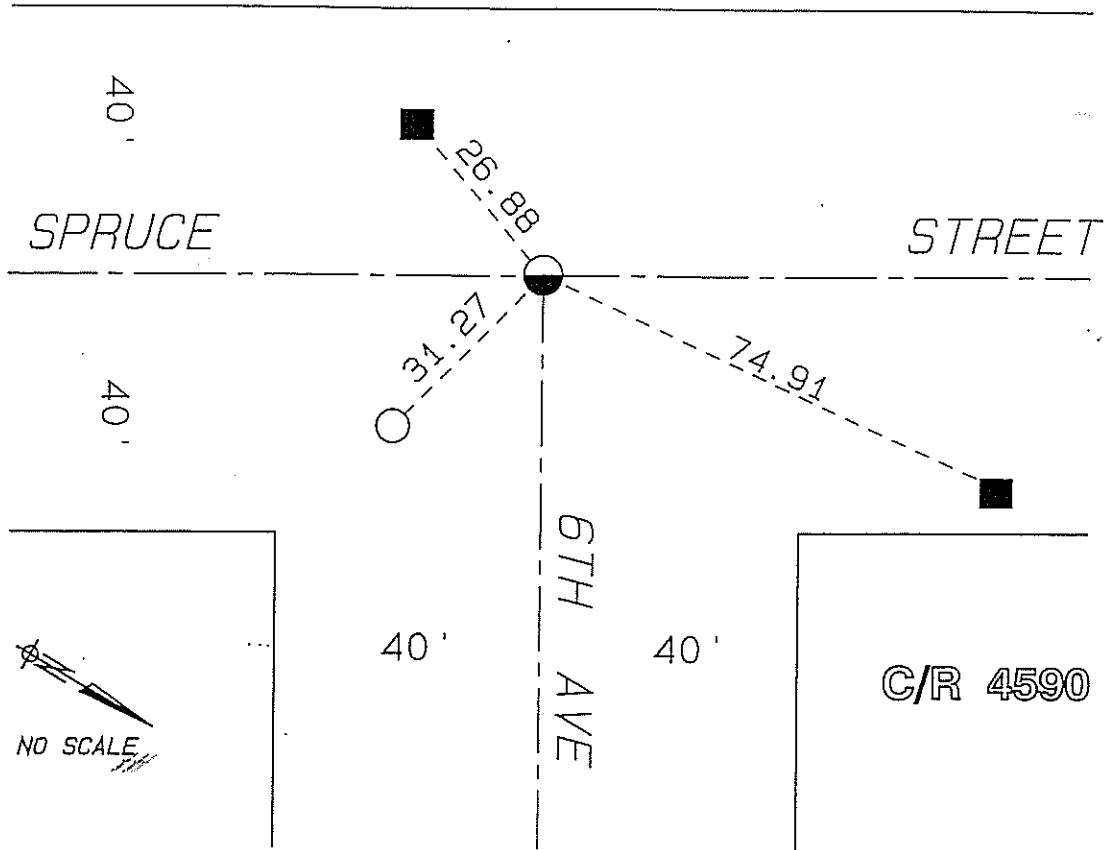
TIE # 223-A

DATE: 12/2016

6TH AVE @ SPRUCE ST.

DRAWN: PF CHECKED: PF

ROS 15770



● — FOUND NAIL AND TAG MARKED "LS 4670" PER RECORD OF SURVEY 15770 AND CORNER RECORD 4590. MEASURED POSITION OF FOUND TAG TO SHOWN REFERENCE TIES. REMOVED TAG AND FOUND 5/8" OVAL PIN 8" BELOW ROAD SURFACE AT SAME POSITION AS FOUND TAG. SET NEW GEAR SPIKE AND WASHER MARKED "CITY ESC" AT SAME POSITION OF FOUND TAG AND IRON PIN IN NEW ROAD SURFACE AFTER STREET REPAVING.

■ — FOUND "X" IN CONCRETE WALK, USED AS REFERENCE TIE TO FOUND AND RESET MONUMENTS.

○ — SET PK NAIL IN ASPHALT AS REFERENCE TIE TO FOUND AND RESET MONUMENTS.