



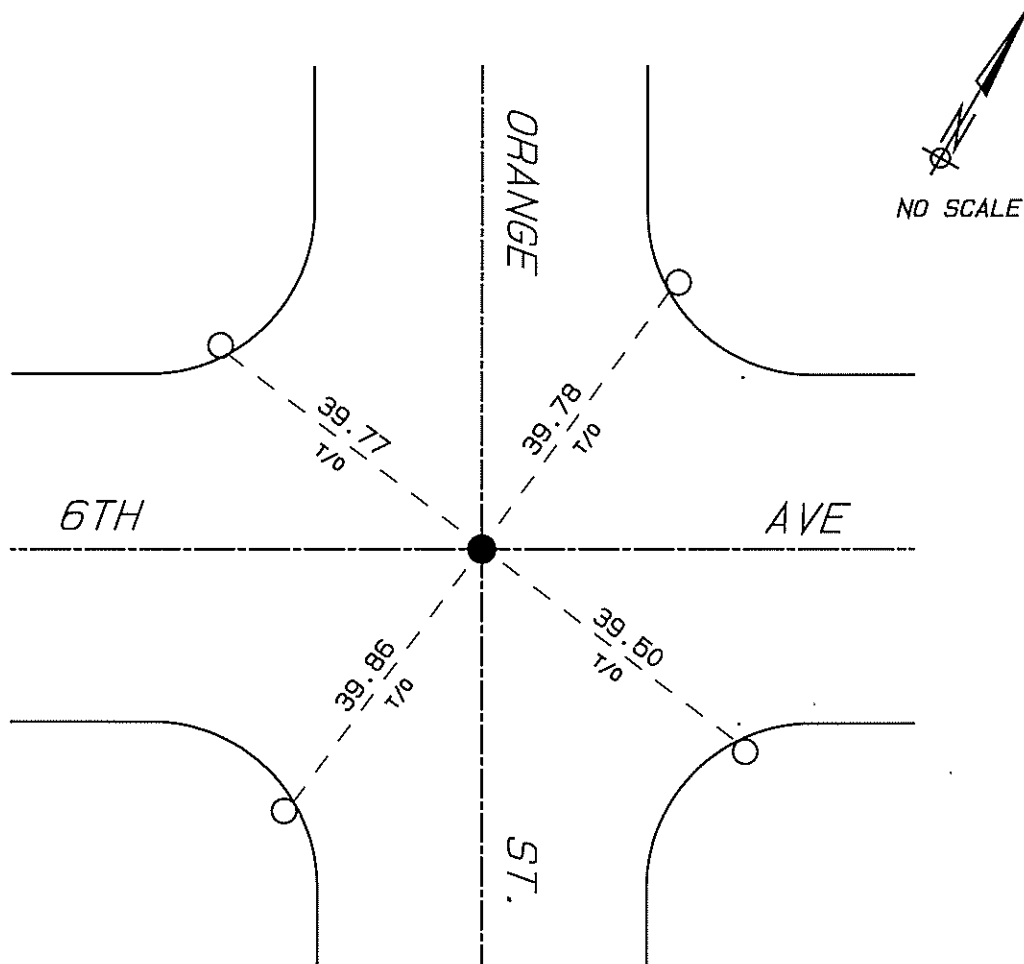
**CITY OF ESCONDIDO**  
**GENTERLINE INTERSECTION TIES**

TIE # 1597

DATE: 8/2014

DRAWN: PF CHECKED: PF

6TH AVE @ ORANGE ST.



● — FOUND 5/8" PIN 10" BELOW ASPHALT ROAD SURFACE PER CORNER RECORD 14373, AND MAP 15468. SET SPIKE AND WASHER MARKED "CITY ESC" ABOVE PIN IN NEW ASPHALT PATCH. SEE CORNER RECORD.

○ — SET LEAD AND TACK IN TOP OF CURB ON TANGENT OVER.