

CITY OF ESCONDIDO  
C/L INTERSECTION TIES

9TH AVE @ CHESTNUT ST.

TIE # 466-A

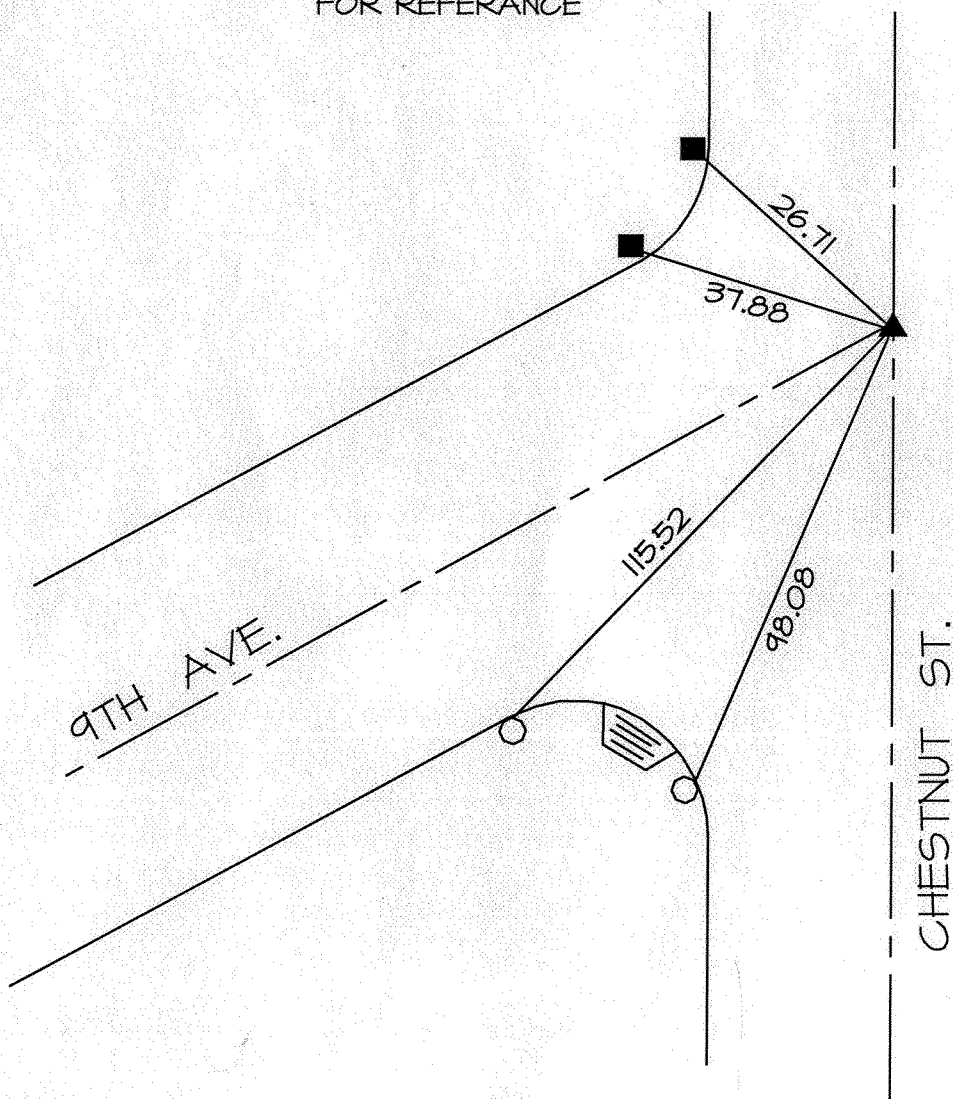
DATE: 12/2005

DRAWN: PF CHECKED: PF

NOTE: SEE TIE SHEET #466  
FOR REFERANCE



NO SCALE



- ▲ — FOUND 3/4" IRON PIPE AND TAG MARKED "CITY ESC"  
IN WELL MONUMENT PER CITY TIE SHEET # 466.
- — FOUND CHISELED X IN TOP OF CURB PER CITY TIE  
SHEET #466. REPLACED WITH LEAD AND TACK.
- — SET LEAD AND TACK IN TOP OF CURB.