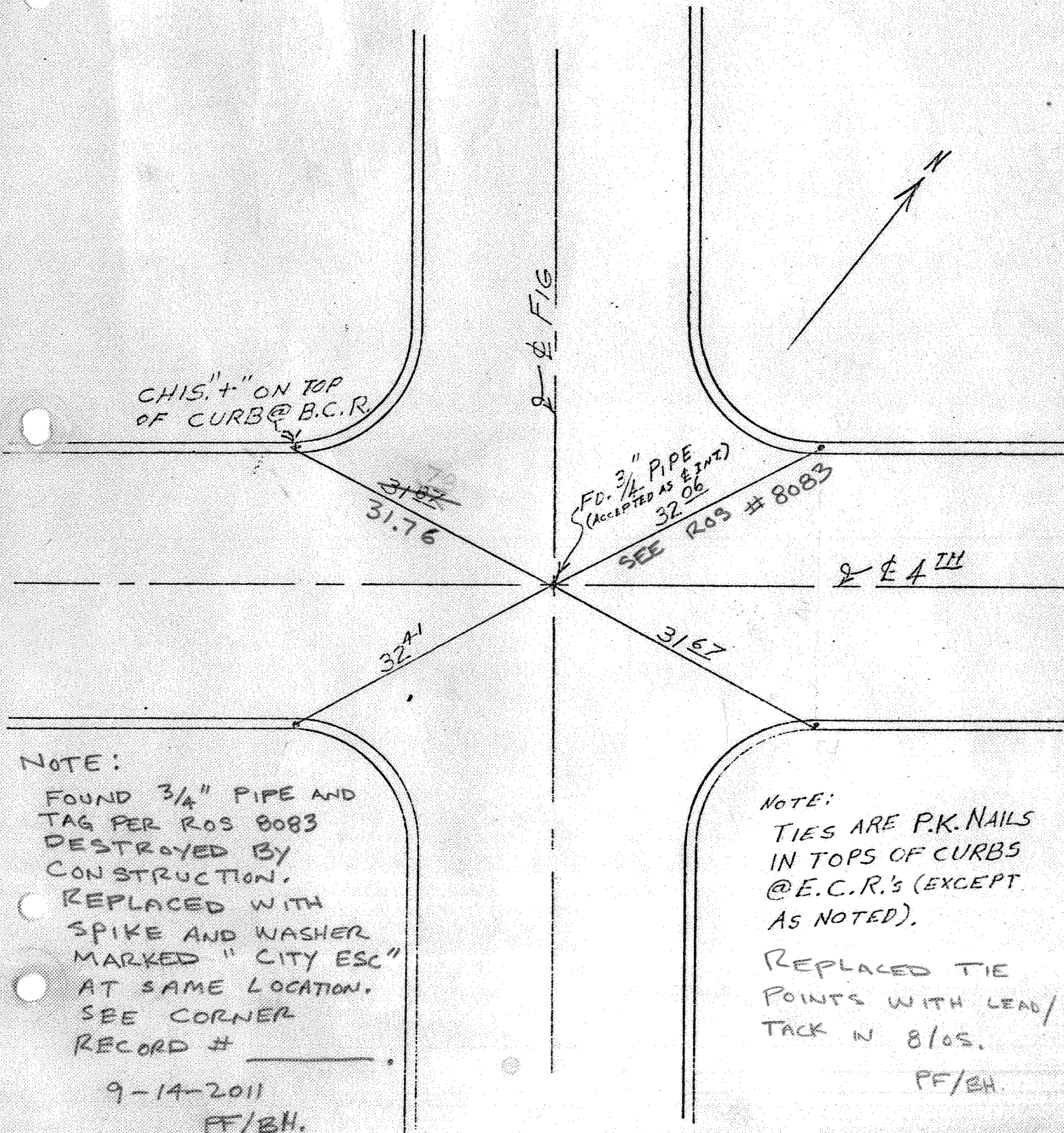


2 INTERSECTION TIES

515

4TH & FIG



CHIS. 1/4" ON TOP OF CURB @ B.C.R.

FD. 3/4" PIPE (ACCEPTED AS EINT) 32.06

SEE ROS # 8083

NOTE:

FOUND 3/4" PIPE AND TAG PER ROS 8083 DESTROYED BY CONSTRUCTION. REPLACED WITH SPIKE AND WASHER MARKED "CITY ESC" AT SAME LOCATION. SEE CORNER RECORD # _____

9-14-2011

FF/BH.

NOTE:

TIES ARE P.K. NAILS IN TOPS OF CURBS @ E.C.R.'S (EXCEPT AS NOTED).

REPLACED TIE POINTS WITH LEAD/TACK IN 8/05.

FF/BH.