

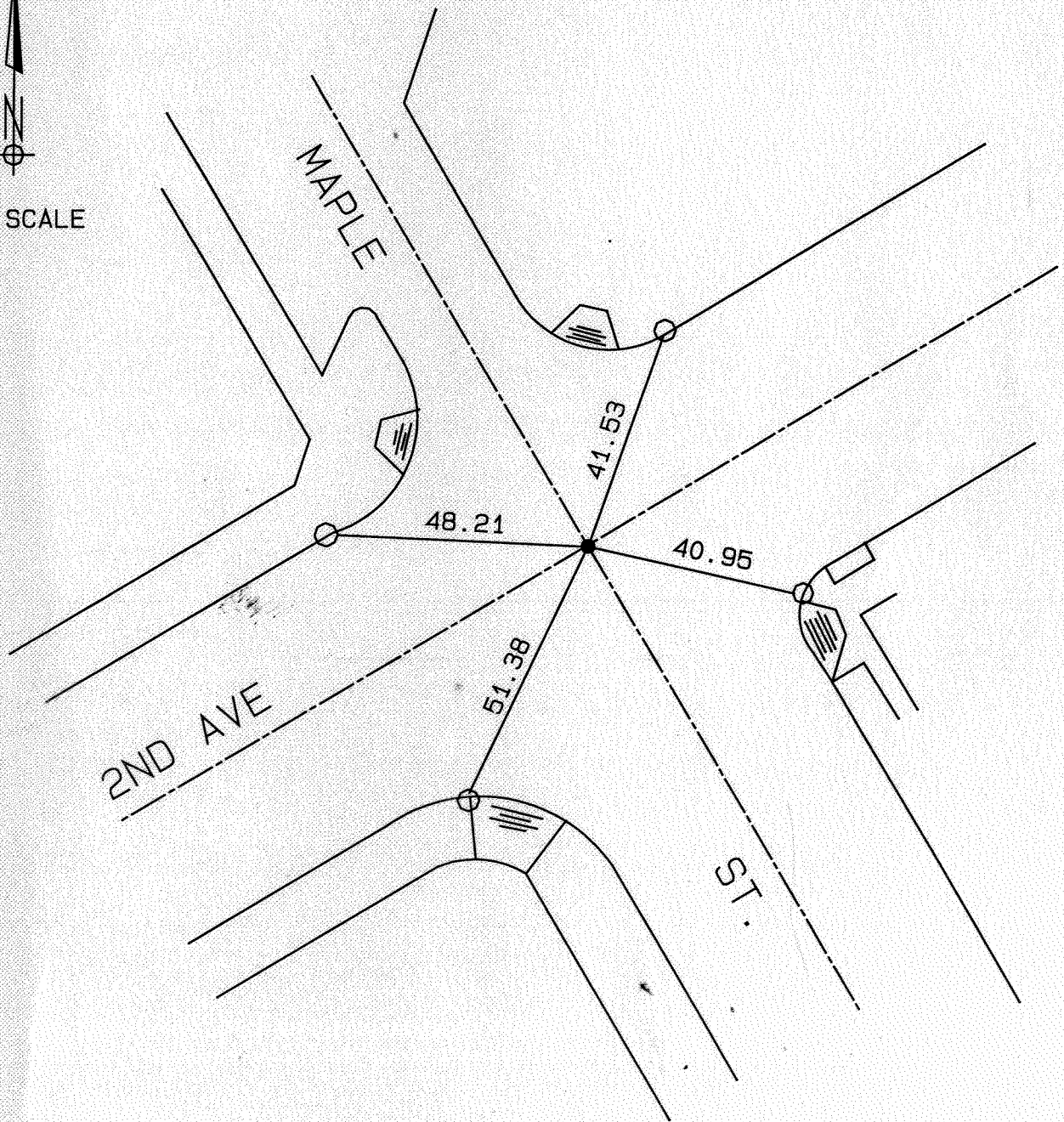
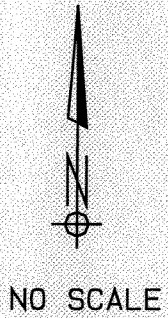
CITY OF ESCONDIDO
C/L INTERSECTION TIES

TIE # 1286

DATE: 12/8/2006

MAPLE ST. @ SECOND AVE

DRAWN: PF CHECKED: PF



- — POSITION OF C/L INTERSECTION PER ROS #14278
NOTHING FOUND OR SET
- — SET LEAD AND TACK IN TOP OF CURB AS TIE POINT