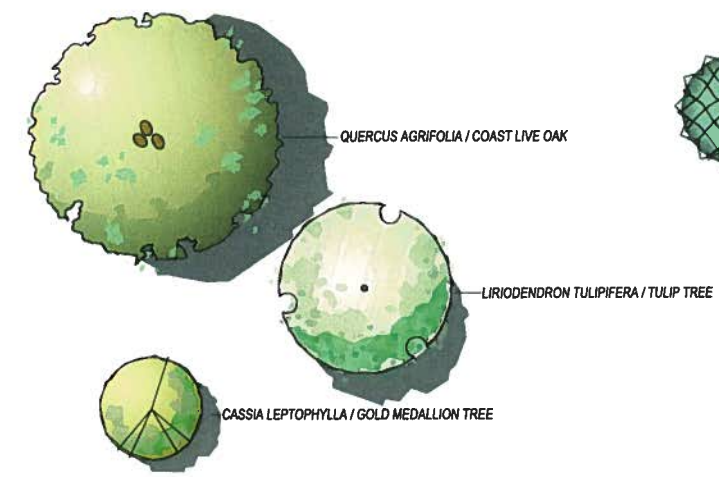


LEGEND

- | | | | | | |
|---|--|----|---|----|---|
| 1 | REMOVABLE BOLLARDS | 10 | WOOD BENCHES WITH BACK | 22 | RAISED PLANTER |
| 2 | KIOSK | 11 | TREE GRATES | 23 | SPLASH PAD WITH COLORED CONCRETE PAVING |
| 3 | GAME TABLE | 12 | GATEWAY SIGNAGE | 24 | STEEL TRELLIS WITH VINES |
| 4 | EXISTING SIGN TO REMAIN | 13 | EXISTING ART PIECE TO BE RELOCATED | 25 | COMPASS ROSE PAVING PATTERN (LIGHTER PAVERS WITH STONE BANDING) |
| 5 | PROPOSED NEW TREES (SEE LEGEND AT RIGHT) | 14 | STEEL TRELLIS | 26 | POTENTIAL ART BENCHES |
| 6 | PROPOSED NEW WHITE LED ACORN STYLE PEDESTRIAN LIGHTS | 15 | DECORATIVE PAVERS - PEDESTRIAN | 27 | POTENTIAL ART PICNIC TABLES |
| 7 | HISTORIC ENGRAVED PAVER STONE - 12" WIDE (15 TOTAL) | 16 | FUTURE COFFEE KIOSK LOCATION | 28 | BICYCLE RACK |
| 8 | DECORATIVE PAVERS - VEHICULAR | 17 | EXISTING TREE TO REMAIN | 29 | FUTURE RESTROOM BUILDING |
| 9 | DECORATIVE STONE PAVERS | 18 | WATER STREAM / FOUNTAIN | 30 | FUTURE PARKING LOT DRIVEWAY |
| | | 19 | CAST IRON OR CONCRETE DETECTABLE WARNING BAND | 31 | RED LED COLOR UPLIGHT AT TREES |
| | | 20 | EXISTING ART PIECE TO REMAIN | 32 | LED DOWN LIGHT AT TRELLISES |
| | | 21 | TRASH / RECYCLING RECEPTACLE | | |

SEE SHEETS 2, 3 AND 4 FOR DESIGN CHARACTER IMAGES

PROPOSED TREES:



PROPOSED SHRUBS:



Brushstrokes

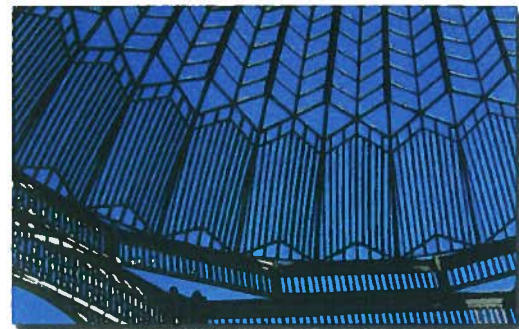
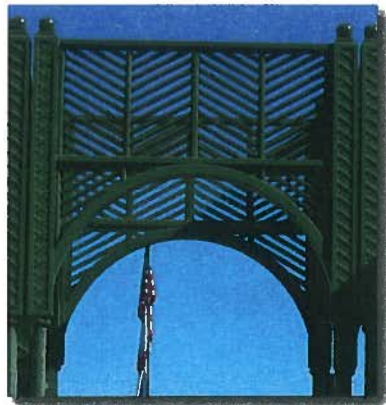
SCHMIDT DESIGN GROUP, INC.
 BALANCING ARTISTIC EXPRESSION IN DESIGN WITH ENVIRONMENTAL SENSITIVITY
 2555 Fourth Avenue, San Diego, CA 92103
 telephone (619) 236-1462 facsimile (619) 236-8792
 www.schmidtdesign.com
 Lic. CA 2138, NV 219, AZ 34139

MAPLE STREET PEDESTRIAN PLAZA
 MASTER PLAN CONCEPT
 CITY OF ESCONDIDO, CALIFORNIA



SUBCONSULTANTS:
 PAUL HOBSON, ARTIST
 GRAPHIC SOLUTIONS,
 I.S.W. Engineers
 SHEET MS-1 OF 4
 DATE: AUGUST 4, 2009

ARCHITECTURAL MATERIALS



GATEWAY SIGN AND SHADE STRUCTURES INCORPORATE IRON WORK SIMILAR TO CITY HALL DOME

SITE FURNISHINGS



STEEL REMOVABLE BOLLARD AND BIKE RACK
COLOR: BLACK



BENCH
COLOR: BLACK WITH FSC-CERTIFIED IPE WOOD SLATS



GAME TABLE
COLOR: BLACK WITH FSC-CERTIFIED IPE WOOD SLATS



STEEL TRASH RECEPTACLE
COLOR: BLACK



LED ACORN LIGHT TO MATCH EXISTING ON GRAND AVENUE
COLOR: GREEN



STEEL TREE GRATE
COLOR: BLACK
DESIGN TO COORDINATE WITH TRELLIS/SIGN DESIGNS



CASSIA LEPTOPHYLLA (GOLD MEDALLION TREE)



LIRIODENDRON TULIPIFERA (TULIP TREE)



ALOE STRIATA (CORAL ALOE)



VITIS CALIFORNICA 'ROGER'S RED' (ROGER'S RED CALIFORNIA GRAPE)

TREES AND SHRUBS



QUERCUS AGRIFOLIA (COAST LIVE OAK)

MOSAIC TILES EXAMPLES (NIKI DE SAINT PHALLE)



PAVING MATERIALS



PLAZA BRICK PAVERS
RUNNING BOND PATTERN

TILE MOSAICS (TRIBUTE TO NIKI DE SAINT PHALLE)

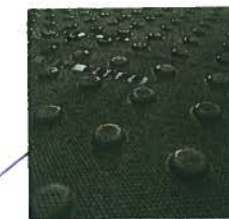


HISTORIC ENGRAVED PAVER STONE



COMPASS ROSE EXAMPLE (PAVERS/STONE MATERIALS)

DETECTABLE WARNING STRIP



MATERIAL: CAST IRON OR CONCRETE
2' MINIMUM WIDTH



Brushstrokes

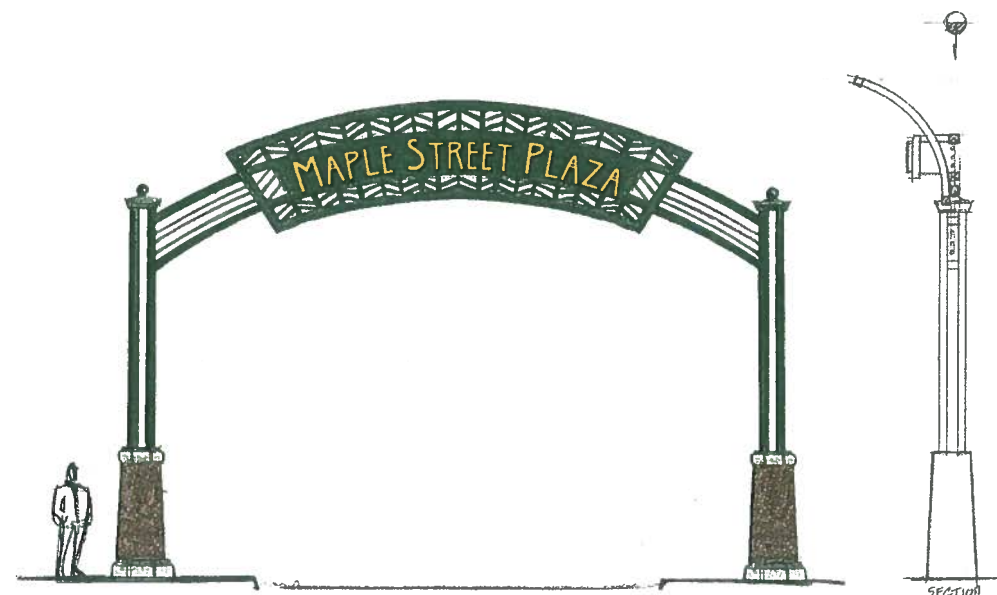
SCHMIDT DESIGN GROUP, INC.
BALANCING ARTISTIC EXPRESSION IN DESIGN WITH ENVIRONMENTAL SENSITIVITY
2655 Fourth Avenue, San Diego, CA 92103
telephone (619) 236-1462 facsimile (619) 236-8792
www.schmidtsg.com
Lic. CA 2138, NV 219, AZ 34139

MAPLE STREET PEDESTRIAN PLAZA
PROPOSED MATERIALS
CITY OF ESCONDIDO, CALIFORNIA

SUBCONSULTANTS:
PAUL HOBSON, ARTIST

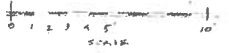
SHEET MS-2 OF 4
DATE: AUGUST 4, 2009

GATEWAY CONCEPT



GRAPHIC SOLUTIONS.
7/22/09

GATEWAY - SCHEME A



GRAPHIC SOLUTIONS.
7/22/09

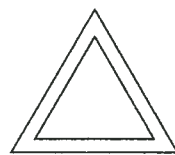
GATEWAY - SCHEME A

KIOSK CONCEPT



GRAPHIC SOLUTIONS.
7/22/09

3 SIDED KIOSK - TYPICAL



3 SIDED KIOSK - TOP VIEW
SIDE 1: LOCATION MAP & DIRECTIONAL SIGN
SIDE 2: ELECTRONIC TOUCH SCREEN & DIRECTIONAL SIGN
SIDE 3: COMMUNITY ANNOUNCEMENTS CABINET



2 SIDED KIOSK - TOP VIEW
SIDE 1: LOCATION MAP & DIRECTIONAL SIGN
SIDE 2: COMMUNITY ANNOUNCEMENTS CABINET

DIRECTIONAL SIGN CONCEPT



GRAPHIC SOLUTIONS.
7/22/09

DIRECTIONAL

Brushstrokes

SCHMIDT DESIGN GROUP, INC.



BALANCING ARTISTIC EXPRESSION IN DESIGN
WITH ENVIRONMENTAL SENSITIVITY
2655 Fourth Avenue, San Diego, CA 92109
telephone (619) 236-1462 facsimile (619) 236-8792
www.schmidtsg.com
Lic. CA 2138, NV 219, AZ 34139

MAPLE STREET PEDESTRIAN PLAZA
GATEWAY, KIOSK, AND DIRECTIONAL SIGN CONCEPT
CITY OF ESCONDIDO, CALIFORNIA

SUBCONSULTANTS:
PAUL HOBSON, ARTIST

GRAPHIC SOLUTIONS.

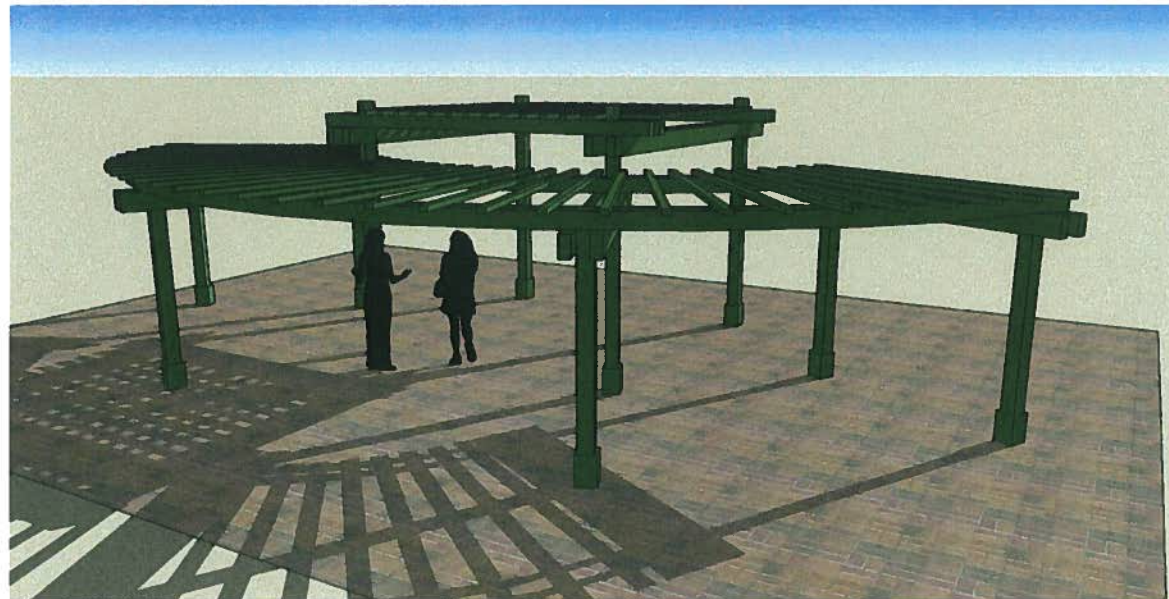
SHEET MS-3 OF 4
DATE: AUGUST 4, 2009



FOUNTAIN CONCEPT



PLANTER AND COMPASS ROSE CONCEPT



TRELLIS CONCEPTS



Brushstrokes