

Welcome to Escondido Fire Station 1! This map will guide you through this exciting 28,340 square-foot facility but feel free to ask Fire Department personnel if you have questions about the facility or our procedures.

Training Room
This room will be used for firefighter training classes and also serves as a meeting room. It has an exterior public entry that allows access while maintaining security of the station when the crew is on an emergency call. The room is equipped with the latest in audio/video technology.

History Museum
The History Museum offers a glimpse back through the years of the City of Escondido's Fire Department. The Department's first fire engine, "Old Betsy" was purchased in 1926 and has been restored and is on display, along with a mural depicting many events in the history of the Department.

Alerting System
Message boards strategically located throughout the station notify the firefighters about emergency calls, including call type and units dispatched for the fastest possible response.

Turnout Room
To ensure that safety gear is properly stored between work shifts, large ventilated lockers are installed for each firefighter. These lockers allow organized storage of safety gear and supply bags.

Offices
The offices are divided by operational areas. The front offices are for the on duty company officers and battalion chief. The open office is for on shift personnel. The rear offices are for Training and EMS support.

Kitchen/Dining Room
Firefighting crews work 24-hour shifts and often cook their meals in the station. To accommodate their cooking needs, there are three (3) refrigerators and three (3) pantries to serve the station's three (3) different crews.

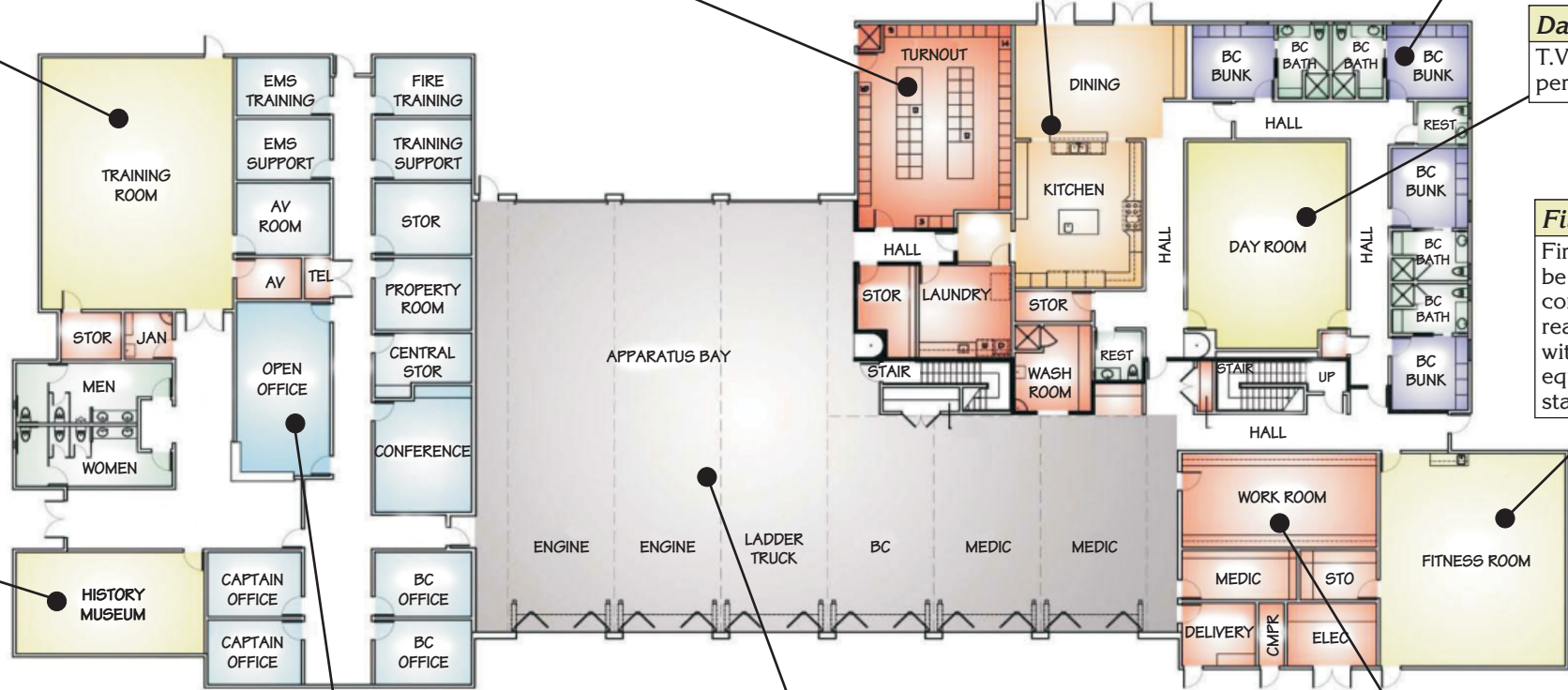
Officers Quarters
Four bedrooms on first floor with individual bathrooms attached.

Day Room
T.V. and recliners for on-duty shift personnel to be used after hours.

Fitness Room
Firefighting requires personnel to be in their best physical fitness condition. To help ensure this readiness, a modern fitness center with adequate space and equipment is included in the fire station design.

Apparatus Bay
The apparatus bay consists of three drive-through bays and three back in bays, to house a fire engine, ladder truck, brush engine and medic ambulance and Battalion Chief's vehicle. It is equipped with a vehicle exhaust removal system for firefighter health and safety.

Shop Area & Paramedic Supplies
Storage of emergency medical supplies. Shop area for storage of tools to maintain equipment.



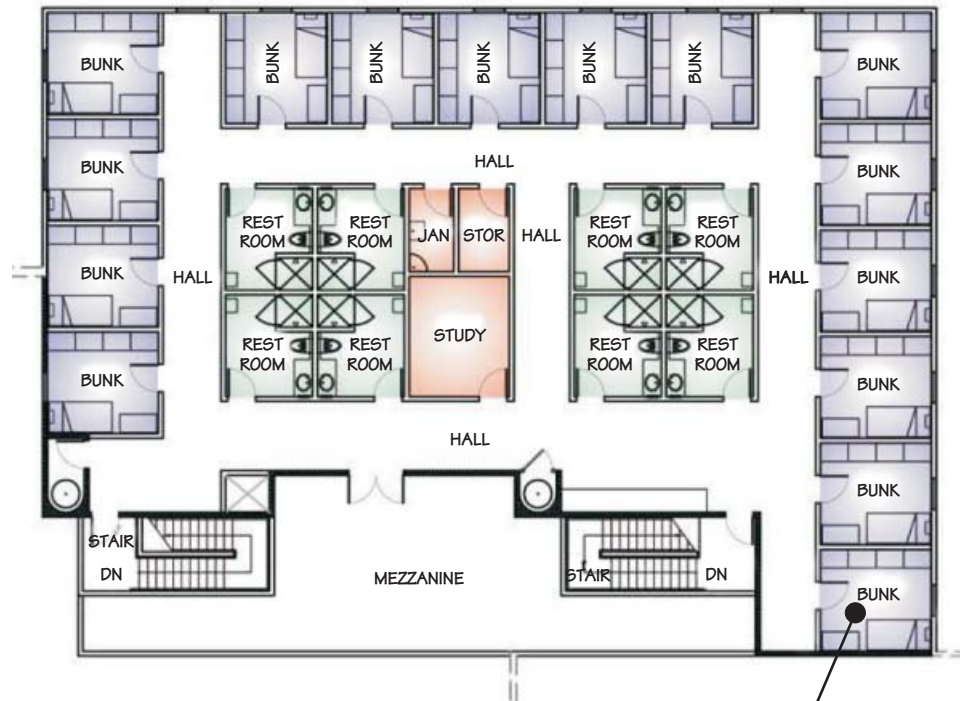
Fire Station No. 1 2nd Floor Plan, Outer Buildings' Information & Facts

Hose Tower Building

- Firefighting in burning structures requires large amounts of compressed breathing air to supply the air packs. To ensure an adequate and safe supply of breathing air, an air compressor and storage system is installed to allow firefighters to safely fill cylinders and monitor air purity.
- Electronic hose lift to dry wet fire hose.
- Hose storage room to store fire hose.

Training Tower

The 5 story training tower located at the rear of the facility, offers the latest in fire training opportunities, including two, live fire burn rooms. One burn room is equipped with a kitchen prop and the other is equipped with a bedroom prop. The tower is equipped with a smoke machine to simulate smoky conditions throughout the structure. From the roof level fire fighters can repel down to the ground or practice lowering equipment or patients.



Reserve Building

- 4 bays to store reserve apparatus
- 4 upstairs room for supplies and equipment for Explorer Program, CERT Program, & Personal Protective Equipment

Sleeping Quarters

The station is outfitted with individual sleeping quarters to serve the firefighting crew of up to nineteen (19) personnel each day. Each dorm room is programmable to the stations alerting system.

Chronology

Groundbreaking - March 6, 2008
Grand Opening - November 14 2009

Construction

Essential Services Facility
Building Square Footage - 28,340
Architect: Jeff Katz, Jeff Katz Architecture
Contractor: Jaynes Corporation

Funding

Fire Station 1 was funded by Proposition P, an \$84.3 million General Obligation Bond approved by voters in November 2004. Proposition P also funded the construction of new joint Police and Fire Headquarters, as well as Fire Stations 3, 6 and 7.

Architecture

The Fire Station 1 complex is one of the largest Fire Station facilities in Southern California, consisting of a 28,340 SF Station, a 4,800 SF Reserve Building to house reserve apparatus, a 2,500 SF Hose Tower Building and a 5 story Training Tower. The site includes a 30,000 gallon recycled water system which recaptures and reuses water used on site for training activities.

The station was designed to reflect the historic nature of the department, with the History Museum prominently located near the building entrance. The exterior materials consist of a stone veneer wainscot, with stucco walls and metal roofing. The use of creative lighting and landscaping enhance the interior and exterior design features of the station.

Technology

- Cisco State of the Art Network
- Enhanced network capacity to support Voice, Data and Video
- Alerting System with audio and visual alerts
- Voice Over Internet Protocol (VOIP) phone technology
- Exterior Security Surveillance monitoring