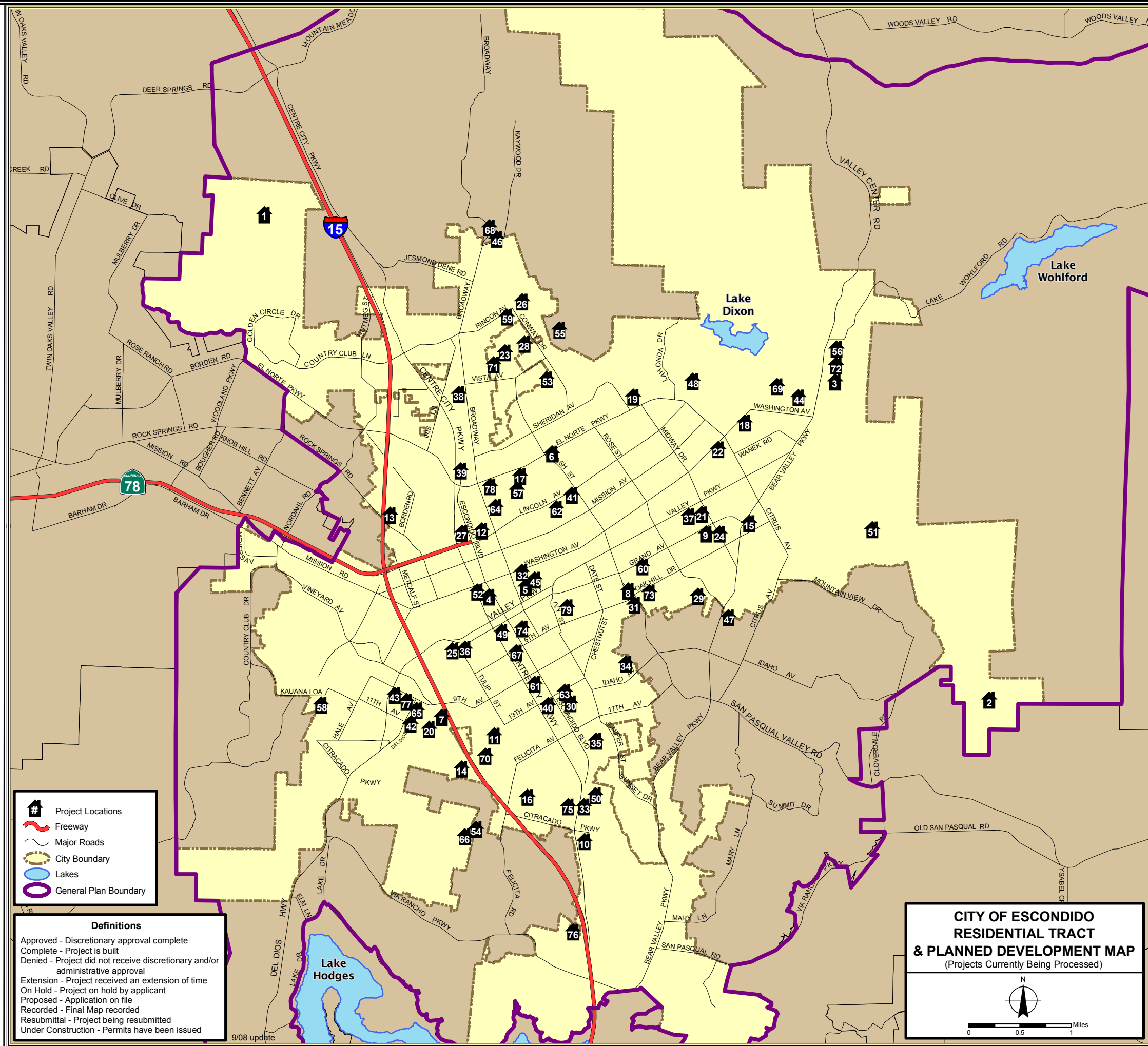


City of Escondido & Sphere of Influence

Tract #	Applicant	Address	# of Units	Status
1	Tract 683-J HighPoint	Woodland Heights Glen	39 SFR	Recorded
2	Tract 833 Rancho Vistamonte	Rockwood Rd.	80 SFR	On Hold
3	Tract 839 Eureka Springs - Lennar	Bear Vly / Lake Wohlford	340 SFR	Complete
4	Tract 858 William Lyon Homes	501 N. Escondido Bl.	92 condos	Resubmittal
5	Tract 865 Sebastian DeFietas	125 Pennsylvania Av.	14 condos	Complete
6	Tract 869 JP Engineering	1220 N. Ash St.	Fire Station	Complete
7	Tract 870 Weststone Management	1564 Tanglewood Ln.	24 condo conv.	Complete
8	Tract 871 Jim Neil	495-505 San Pasqual Rd.	116 condo conv.	Complete
9	Tract 872 Larry Cole	1915 E. Grand Av.	16 condo conv.	Complete
10	Tract 873 Centex	2500 S. Escondido Bl.	62 condos	Complete
11	Tract 874 HUM Development LLC	1321 S. Upas St.	6 SFR	Complete
12	Tract 875 P & D Consultants	240 W. Lincoln Av.	41 condo conv.	Complete
13	Tract 876 Centex	1220 Seven Oaks Rd.	27 SFR	Complete
14	Tract 877 Terra Resources Group	1995 Bernardo Ln.	15 SFR	Approved
15	Tract 878 Meridian Communities	323 Lion Vly Rd.	14 SFR	Extension
16	Tract 879 Casas, Suenos De Oro	2053 Alexander	7 SFR	Complete
17	Tract 880 Walton Esc. / JP Eng.	1211 N. Fig St.	7 SFR	Approved
18	Tract 881 Shea Homes	2541 E. Washington	27 SFR	Approved
19	Tract 883 Michael Crews Dev.	1970 E. El Norte Pkwy.	11 SFR	Approved
20	Tract 884 The Acres	1575 Tanglewood Ln.	158 condo conv.	Proposed
21	Tract 886 Michael Crews Dev.	1998 E. Grand Av.	14 SFR	Complete
22	Tract 888 Bill Campbell	539 N. Citrus Av.	7 SFR	Under Constr.
23	Tract 889 RMCI Group	733 Stanley Av.	16 SFR	Under Constr.
24	SUB08-0018 Paxton Surveying	219 S. Midway Dr.	condo conv.	Extension
25	Tract 891 Tulip Partners	101 S. Tulip St.	13 SFR	Complete
26	Tract 892 Rincon Esc. LLC	Rincon Av.	41 SFR	Approved
27	Tract 893 Weststone Management	1075 N. Esc. Bl.	23 condo conv.	Complete
28	Tract 894 Merit Group	1026 Lenher Av.	10 SFR	Approved
29	Tract 895 Wash. Meadows Dev.	Boyle Av.	8 SFR	Approved
30	Tract 896 Michael Crews Dev.	Maple St.	5 SFR	Complete
31	Tract 898 Walton Esc. LLC	701 San Pasqual Rd.	12 SFR	Proposed
32	Tract 899 Fred Meyer	424 N. Juniper St.	20 condos	Approved
33	Tract 900 Washington Meadows LLC	2319 Cranston	4 SFR	Approved
34	Tract 901 Michael Crews Dev.	1405 Purdum Ln.	5 SFR	Complete
35	Tract 903 James Nicholas	120 W. Vermont Av.	14 condo conv.	Denied
36	Tract 904 Weststone Management	101 S. Spruce St.	81 condo conv.	Complete
37	Tract 905 Condo Conversion.com	1825 E. Valley Pkwy.	71 condo conv.	Complete
38	Tract 906 River Village Apts	1845 N. Broadway	123 condo conv.	Denied
39	Tract 907 Premier Coastal Dev.	1350 N. Escondido Bl.	70 condo conv.	Complete
40	Tract 908 Weststone Management	340 W. 15th Av.	20 condo conv.	Under Constr.
41	Tract 910 Habitat for Humanity	1161 E. Lincoln Av.	7 SFR	Complete
42	Tract 912 Jackson Pendo	1634 Del Dios Rd.	42 condos	Complete
43	Tract 913 Archstone-Smith	1361 W. 9th Av.	264 condo conv.	Approved
44	Tract 914 Hallmark	3022 E. Washington Av.	30 SFR	Under Constr.
45	Tract 915 Curtis Gabhart	204 Clark St.	20 condo conv.	Approved
46	Tract 916 Innovative Communities	North Av. / Laurashawn	34 SFR	Approved
47	Tract 919 Peter Khew	Bear Valley Pkwy.	17 SFR	Approved
48	Tract 920 Lee Vance	2355 E. Lincoln Av.	96 SFR	Proposed
49	Tract 921 N/A	203 S. Orange St.	102 condos	On Hold
50	Tract 924 Trinity Housing	338 Brotherton St.	22 SFR	Complete
51	Tract 925 Frank Fitzpatrick	3251 Reed Rd.	6 SFR	Proposed
52	Tract 926 William Lyon Homes	439 W. Washington Ave.	82 condos	Under Constr.
53	Tract 929 Masson & Associates	1158 Hubbard Av.	12 SFR	Proposed
54	Tract 931 Jennings Development	Bernardo / Hamilton	5 SFR	Proposed
55	Tract 932 Hallmark - Masson & Assoc.	1185 Lehner Av.	179 SFR	Approved
56	Tract 933 N.E. Gateway LLC	Bear Vly. / Lake Wohlford	20 SFR	Approved
57	Tract 934 Paxton Surveying & Eng.	1207 N. Gamble St.	5 SFR	Approved
58	Tract 936 Masson & Assoc.	2005 Harmony Grove Rd.	24 SFR	Proposed
59	Tract 938 Larry Templeton	725 Rincon Av.	5 SFR	Proposed
60	Tract 939 Michael Reifeiss	1325 E. Grand Av.	11 condos	Approved
61	Tract 940 Chris Herd	1037 S. Orange St.	5 SFR	Approved
62	Tract 941 Lindsay Erickson	928 N. Fig St.	14 condo conv.	Approved
63	Tract 942 PB South Escondido LLC	1560 S. Esc. Bl.	24 condos/m.u.	Approved
64	Tract 943 Anthony Taylor	1132 N. Broadway	24 condo conv.	Approved
65	Tract 945 Stu Wilson	1006 Del Dios Rd.	28 condo conv.	Approved
66	Tract 947 Pacific Group	2435 Bernardo Ave.	7 SFR	Recorded
67	Tract 949 Habitat for Humanity	402 W. 6th Ave.	7 condos	Complete
68	Tract 950 Jack Biery	N. Broadway	6 SFR	Proposed
69	Tract 951 RMCI	2888 E. Washington Ave.	12 SFR	Approved
70	Tract 954 Edgehill Estates	1200 W. 15th Ave.	16 SFR	Approved
71	Tract 955 BHA Inc.	522 Lehner Ave.	19 SFR	Proposed
72	Tract 956 Moser Ventures	13950 Valle Lindo Rd.	13 SFR	Approved
73	Tract 957 Lively Development	1301 Oakhill Dr.	7 SFR	Proposed
74	Tract 958 Brad Tuck	444 S. Escondido Bl.	137 condos/m.u.	Approved
75	Tract 959 Bill Diehl	2329 S. Centre City	95 condos	Proposed
76	Tract 960 Mark Brenck	Clarence Lane	8 SFR	Proposed
77	Tract 961 Masson & Assoc.	1357 9th Ave.	22 SFR	Approved
78	Tract 962 Midland Development	141-221 El Norte Pkwy.	20 condos	Approved
79	SUB08-0014 N/A	444 E. 4th Ave.	condo conv.	Proposed



**CITY OF ESCONDIDO
RESIDENTIAL TRACT
& PLANNED DEVELOPMENT MAP**
(Projects Currently Being Processed)

0 0.5 1 Miles