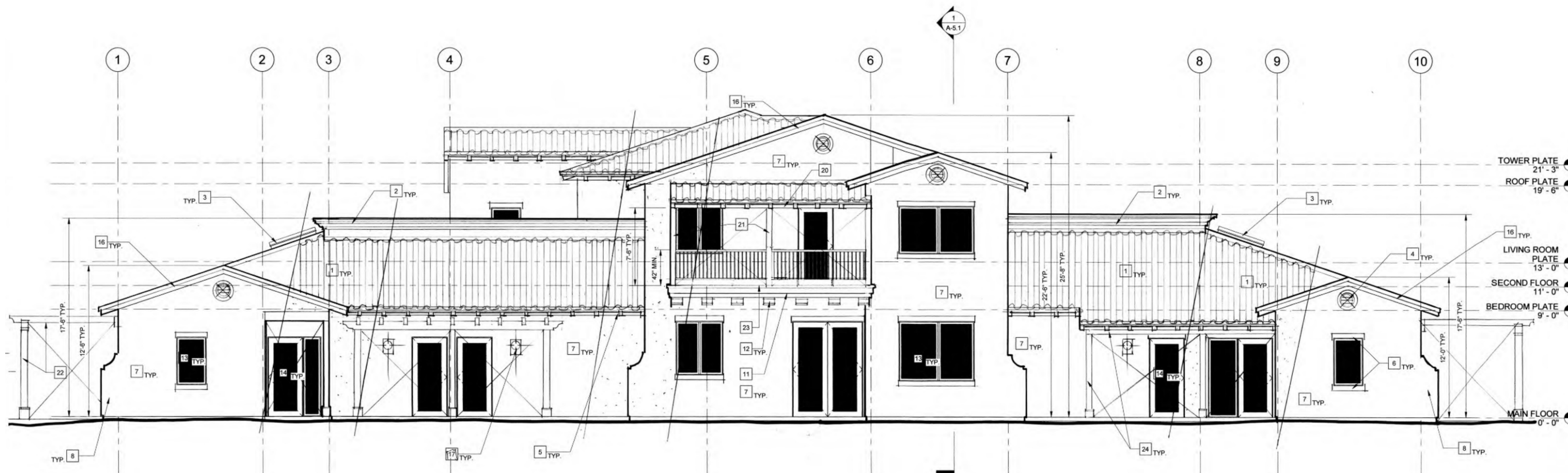


FRONT ELEVATION

1/4" = 1'-0"

TWO STORY ELEVATIONS OF BUILDING #3 SHOWN ON SHEET AC-1, TYP.



REAR ELEVATION

1/4" = 1'-0"

TWO STORY ELEVATIONS OF BUILDING #3 SHOWN ON SHEET AC-1, TYP.

KEYNOTES

- 1 'S' TYPE CONCRETE TILE ROOF. TYP. U.O.N.
- 2 STUCCO "OGGEE" SHAPED WALL COPING. TYP. U.O.N.
- 3 SKYLIGHT TYP. U.O.N.
- 4 RECESSED METAL VENT PAINTED TYP. U.O.N.
- 5 SOFFIT: 2x8 T&G WOOD SIDING - ROUGH SIDE DOWN WITH 4x8 RAFTER TAILS SPACED @ 24" O.C. MAX. ENTIRE ASSEMBLY TO BE PAINTED. TYP. U.O.N.
- 6 STUCCO "FOAM & FIBERGLASS" DETAIL HEAD & SILL PAINTED TYP. U.O.N.
- 7 STUCCO FINISH "SAND FINISH" WITH 3 COAT OF WIRE LATHE O.V.M.B. TYP. U.O.N.
- 8 EXTENDED "DECORATIVE" WALL TYP. U.O.N.
- 9 4-8x WOOD BRACKETS, BEAMS & R.R. SPACED W/ 2x8 T&G WOOD DECKING ASSEMBLY PAINTED TYP. U.O.N. NOTE: ALL MATERIAL R.S.
- 10 4-8x NEWEL POSTS W/ 3/4" TOP & BOTTOM RAIL W/ 1 1/2" BALLUSTRADE @ EQUAL SPACING 4" C.R. MAX. ENTIRE ASSEMBLY PAINTED TYP. U.O.N.
- 11 STUCCO FASCIA & SOFFIT SAND FINISH TO MATCH #7 ABOVE. TYP.
- 12 10' x 10' FOAM & FIBERGLASS STUCCO "CORBEL" ATTACHED TO BROWN COAT - "SMOOTH" PLASTER FINISH.
- 13 VINYL WINDOW W/ LOW 'E' DUAL GLAZING TYP. U.O.N.
- 14 FIBERGLASS DOOR W/ LOW 'E' GLASS PAINTED. TYP. U.O.N.
- 15 FIBERGLASS TEXTURED / PAINTED SLAB DOOR.
- 16 2x WOOD BARGE BOARD PAINTED. TYP. U.O.N.
- 17 EXTERIOR METAL/PAINTED ANG. GLASS LIGHT FIXTURE TYP. U.O.N.
- 18 ALUMINUM GRILL PAINTED. TYP. U.O.N.
- 19 STUCCO "DECO" DETAIL FOAM & FIBERGLASS ATTACHED TO BROWN COAT WITH A SMOOTH PLASTER STUCCO FINISH. TYP. U.O.N.
- 20 6x BEAM R.S. W/ 4x R.R. SPACED & 2x8 R.S. T&G DECKING STAINED. TYP. U.O.N.
- 21 6x6 POST PAINTED & R.S. TYP. U.O.N.
- 22 TRELLIS: 6x6 POST W/ 6x BEAMS & 4x RAFTERS EQUALLY SPACED W/ 2x8 T&G DECKING ENTIRE ASSEMBLY R.S. & PAINTED TYP. U.O.N.
- 23 MONOLITHIC W/P MEMBRANE TYP. U.O.N.
- 24 6x 8 POST W/ 6x BEAM AND STUCCO SOFFIT FINISH. PAINT R.S. EXPOSED WOOD. TYP. U.O.N.

GENERAL NOTES

1. FOR MATERIAL COLORS SEE MATERIAL BOARD.

ARCHITECTURAL LEGEND

- ① Doors
- ⬠ Windows
- ① Keynote
- ⬠ Wall Type
- 1 Interior Elevation
- 1 A-1 Storefront Elevation
- ▲ A-1 Building Elevation
- New Wall
- Existing Wall
- /// Demolition
- /// Insulation
- Overhead
- Centerline
- Property Line
- ① Revision

NOTE: NOT ALL SYMBOLS SHOWN ABOVE ARE USED IN THIS SET OF DRAWINGS.



PRELIMINARY
NOT FOR CONSTRUCTION

I have reviewed these construction documents and have approved their contents as including all of the design aspects I had previously authorized. I understand my project will be constructed as specified by these construction documents.



ARCHITECTURE | DESIGN

BGI ARCHITECTURE

Beery Group Inc.
2091 Las Palmas Drive, St. D
Carlsbad, CA 92011
(760) 438-2963
bgiaarchitect.com



This document is the property of John S. Beery Group, A.I.A. Any unauthorized use or reproduction of this document, in whole or part, is prohibited.

2525 REED ROAD
2525 REED ROAD
ESCONDIDO, CA 92000

REVISIONS	By

Date: 2021.12.14
Scale: 1/4" = 1'-0"
Drawn By: BPB
Job No.: 1908
Sheet Name:

TWO STORY - ELEVATIONS
Sheet No. **A-4.0**