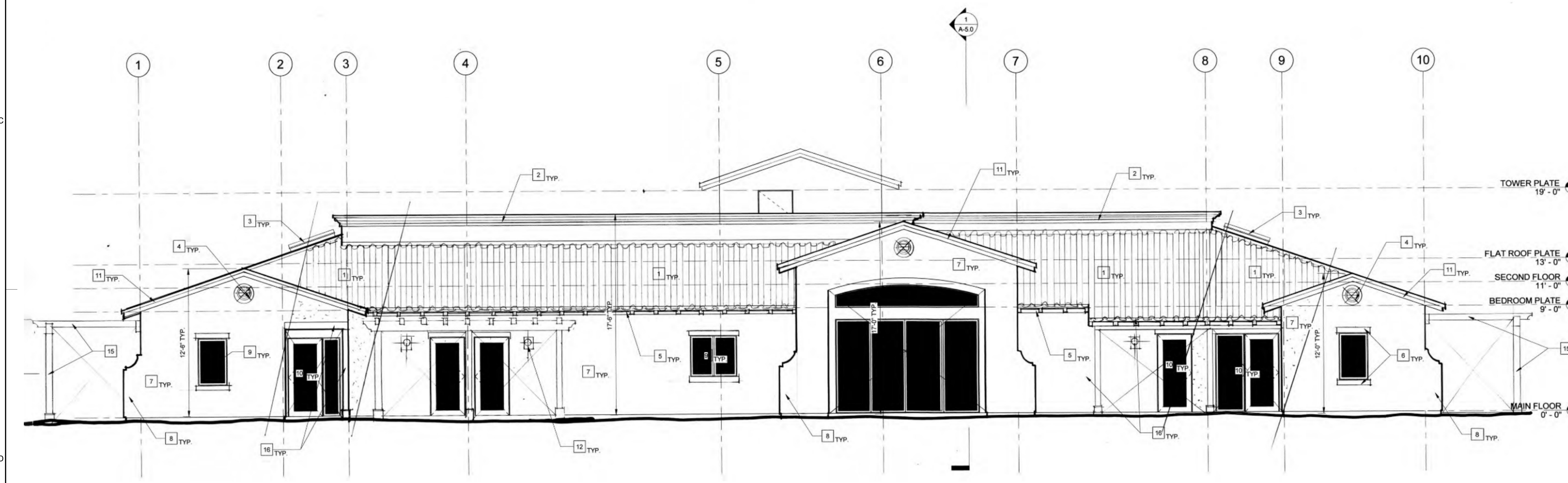


**FRONT ELEVATION**  
1/4" = 1'-0"

**SINGLE STORY ELEVATIONS OF BUILDINGS #1 & #2 SHOWN ON SHEET AC-1, TYP.**



**REAR ELEVATION**  
1/4" = 1'-0"

**SINGLE STORY ELEVATIONS OF BUILDINGS #1 & #2 SHOWN ON SHEET AC-1, TYP.**

**KEYNOTES**

- 1 'S' TYPE CONCRETE TILE ROOF, TYP. U.O.N.
- 2 STUCCO 'OGGEE' SHAPED WALL COPING, TYP. U.O.N.
- 3 SKYLIGHT TYP. U.O.N.
- 4 RECESSED METAL VENT PAINTED TYP. U.O.N.
- 5 SOFFIT: 2x8 T&G WOOD SIDING - ROUGH SIDE DOWN WITH 4x8 RAFTER TAILS SPACED @ 24" O.C. MAX. ENTIRE ASSEMBLY TO BE PAINTED, TYP. U.O.N.
- 6 STUCCO 'FOAM & FIBERGLASS' DETAIL HEAD & SILL PAINTED TYP. U.O.N.
- 7 STUCCO FINISH "SAND FINISH" WITH 3 COAT OF WIRE LATHE O.V.B. TYP. U.O.N.
- 8 EXTENDED 'DECORATIVE' WALL TYP. U.O.N.
- 9 VINYL WINDOW W/ LOW 'E' DUAL GLAZING TYP. U.O.N.
- 10 FIBERGLASS DOOR W/ LOW 'E' GLASS PAINTED, TYP. U.O.N.
- 11 2x WOOD BARGE BOARD PAINTED, TYP. U.O.N.
- 12 EXTERIOR METAL PAINTED ANG. GLASS LIGHT FIXTURE TYP. U.O.N.
- 13 ALUMINUM GRILL PAINTED, TYP. U.O.N.
- 14 STUCCO 'DECO' DETAIL FOAM & FIBERGLASS ATTACHED TO BROWN COAT WITH A SMOOTH PLASTER STUCCO FINISH, TYP. U.O.N.
- 15 TRELLIS: 8x8 POST W/ 6x BEAMS & 4x RAFTERS EQUALLY SPACED W/ 2x8 T&G DECKING. ENTIRE ASSEMBLY R.S. & PAINTED TYP. U.O.N.
- 16 6x 8 POST W/ 6x BEAM AND STUCCO SOFFIT FINISH. PAINT R.S. EXPOSED WOOD, TYP. U.O.N.

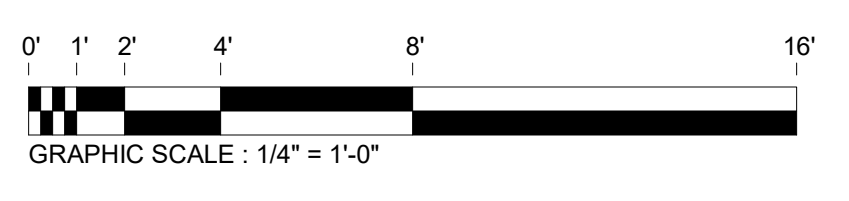
**GENERAL NOTES**

1. FOR MATERIAL COLORS SEE MATERIAL BOARD.

**ARCHITECTURAL LEGEND**

- ① Doors
- Ⓐ Windows
- 1 Keynote
- △ Wall Type
- 1 Interior Elevation
- 1 A-1 Storefront Elevation
- ▲ A-1 Building Elevation
- New Wall
- Existing Wall
- /// Demolition
- /// Insulation
- Overhead
- Centerline
- - - Property Line
- ① Revision

NOTE: NOT ALL SYMBOLS SHOWN ABOVE ARE USED IN THIS SET OF DRAWINGS.



**PRELIMINARY**  
NOT FOR CONSTRUCTION

I have reviewed these construction documents and have approved their contents as including all of the design aspects I had previously authorized. I understand my project will be constructed as specified by these construction documents.

**BGI ARCHITECTURE**  
Beery Group Inc.  
2091 Las Palmas Drive, St. D  
Carlsbad, CA 92011  
(760) 438-2963  
bgiarchitect.com

This document is the property of John S. Beery Architects, A.I.A. Any reproduction, use or reproduction of this document, in whole or part, is prohibited.

**2525 REED ROAD ASSISTED LIVING FACILITY**  
2525 REED ROAD  
ESCONDIDO, CA 92000

REVISIONS	By

Date: 2022.10.06  
Scale: 1/4" = 1'-0"  
Drawn By: BPB  
Job No.: 1908  
Sheet Name: ONE STORY - ELEVATIONS  
Sheet No.: **A-3.0**