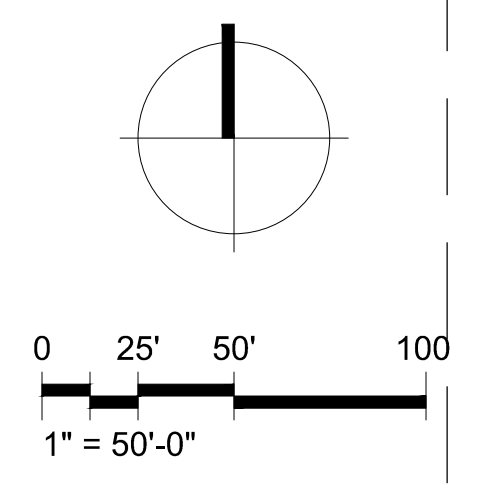


| CONSTRUCTION NOTES |                                      |
|--------------------|--------------------------------------|
| ①                  | 6" CURB                              |
| ②                  | 6" CURB & GUTTER                     |
| ③                  | 0" CURB                              |
| ④                  | CONNECT TO EXISTING CURB             |
| ⑤                  | RETAINING WALL                       |
| ⑥                  | STRIPING BY OTHERS                   |
| ⑦                  | HYDROMODIFICATION STORAGE TANK       |
| ⑧                  | MODULAR WETLAND SYSTEM               |
| ⑨                  | CONNECT TO EXISTING STORM DRAIN LINE |
| ⑩                  | RIBBON GUTTER                        |
| ⑪                  | TYPE B CURB INLET                    |

**GRADING VOLUME:**  
 CUT VOLUME: 1,510 CY  
 FILL VOLUME: 94,870 CY  
 IMPORT VOLUME: 93,360 CY  
 NOTE: EARTHWORK ESTIMATES ARE RAW & UNADJUSTED. TO BE USED FOR PERMITTING PURPOSES ONLY. NOT FOR BIDDING.



ESCONDIDO, CA

**FUSCOE**  
 ENGINEERING  
 6390 Greenwich Dr., Suite 170  
 San Diego, California 92122  
 tel 858.554.1500 • fax 858.597.0335  
 www.fuscoe.com

1101 Second Ave, Ste 100  
 Seattle, WA 98101  
 206 962 6500  
 MG2.com

19-5135-01  
 SEPTEMBER 14, 2022  
 PRELIMINARY  
 GRADING  
 PLAN

# FORMER SEARS REDEVELOPMENT

# GRADING PLAN

ESCONDIDO, CALIFORNIA

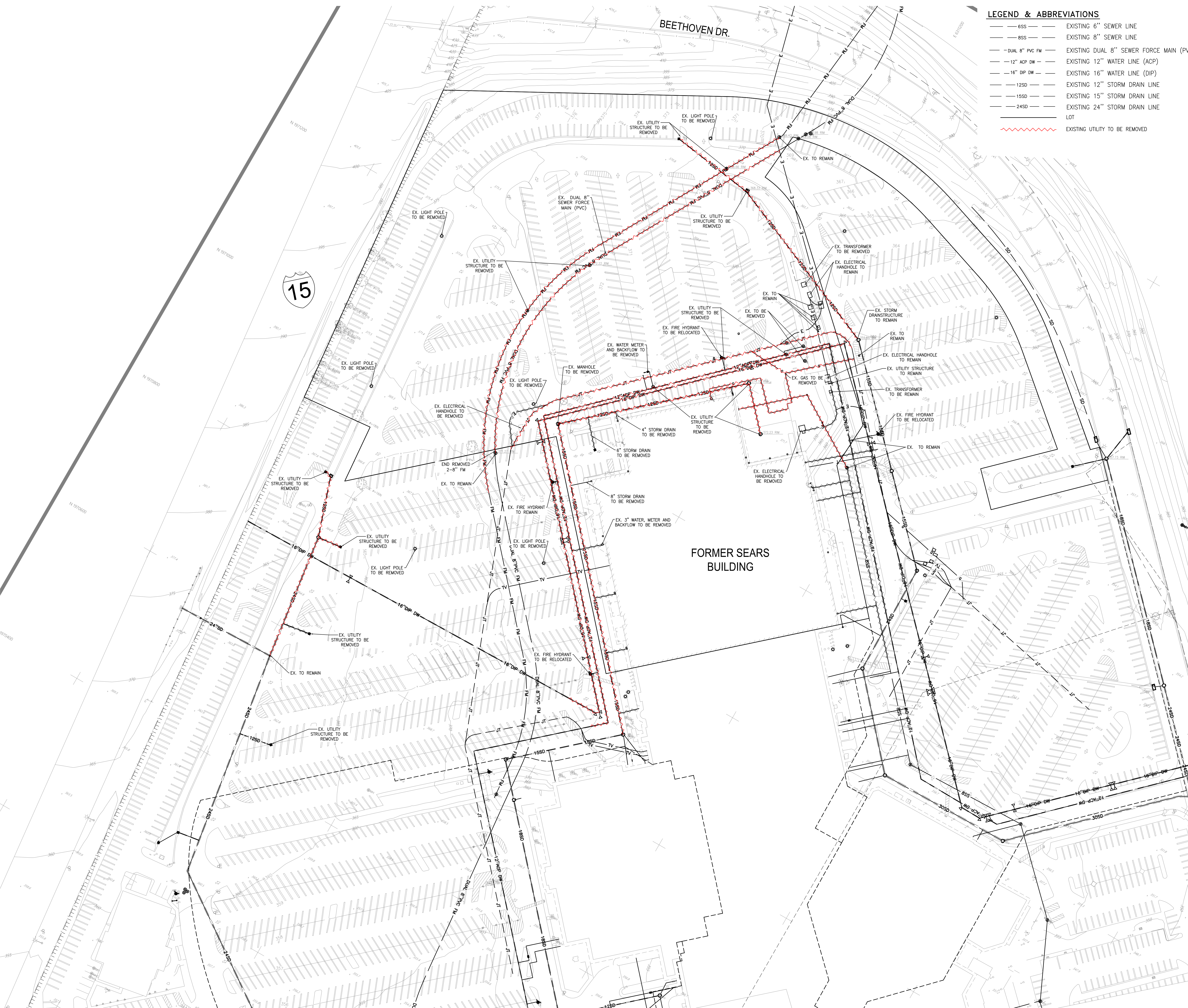
SEPTEMBER 14, 2022

© MG2. All rights reserved. No part of this document may be reproduced in any form or by any means without permission in writing from MG2.



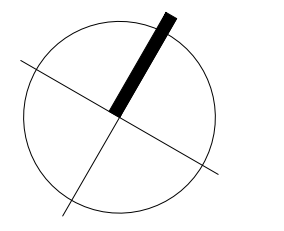
**LEGEND & ABBREVIATIONS**

- 6SS — EXISTING 6" SEWER LINE
- 8SS — EXISTING 8" SEWER LINE
- DUAL 8" PVC FM — EXISTING DUAL 8" SEWER FORCE MAIN (PVC)
- 12" ACP DW — EXISTING 12" WATER LINE (ACP)
- 16" DIP DW — EXISTING 16" WATER LINE (DIP)
- 12SD — EXISTING 12" STORM DRAIN LINE
- 15SD — EXISTING 15" STORM DRAIN LINE
- 24SD — EXISTING 24" STORM DRAIN LINE
- LOT — LOT
- EXISTING UTILITY TO BE REMOVED



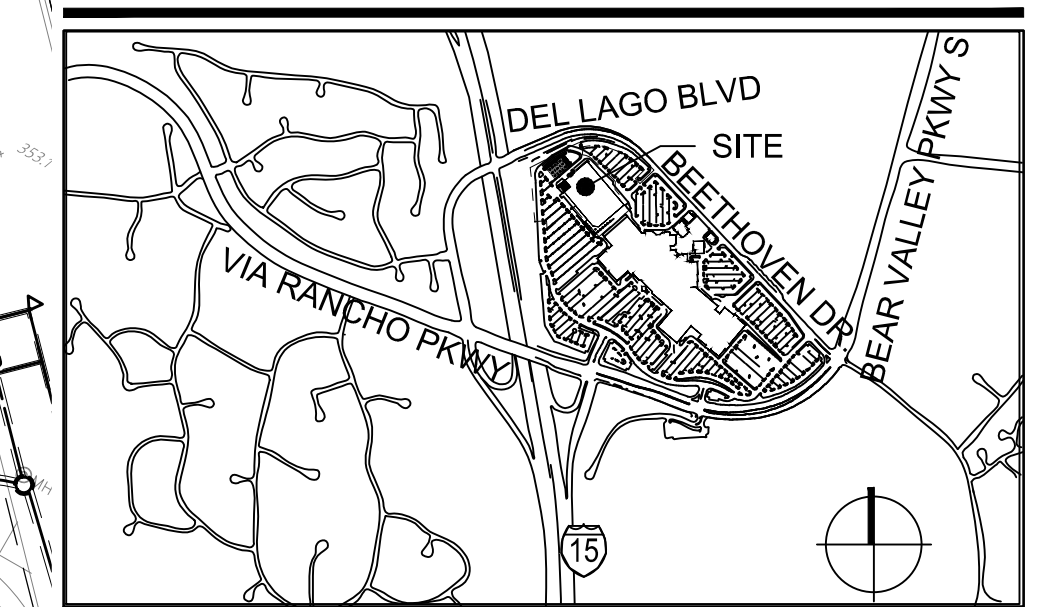
FORMER SEARS BUILDING

NOTES:  
EXISTING CONDITIONS TO BE FIELD VERIFIED.



0 25' 50' 100'  
1" = 50'-0"

**VICINITY MAP**



ESCONDIDO, CA

**FUSCOE**  
ENGINEERING  
6390 Greenwich Dr., Suite 170  
San Diego, California 92122  
tel 858.554.1500 • fax 858.597.0335  
www.fuscoe.com

1101 Second Ave, Ste 100  
Seattle, WA 98101  
206.962.6500  
MG2.com

**MG2**

19-5135-01  
AUGUST 10, 2022  
UTILITIES  
DEMOLITION  
EXHIBIT

# FORMER SEARS REDEVELOPMENT UTILITIES DEMOLITION EXHIBIT

ESCONDIDO, CALIFORNIA

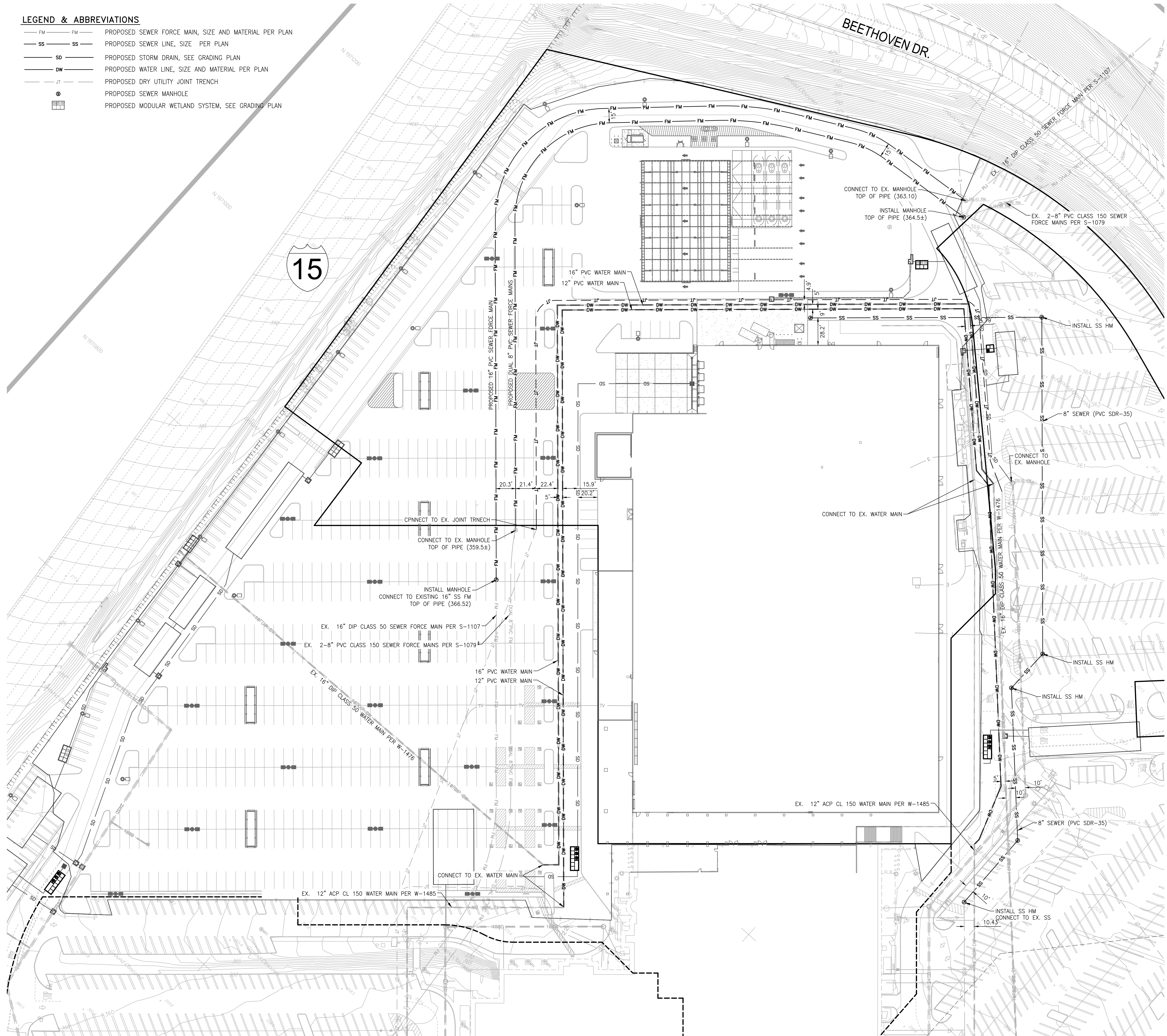
AUGUST 10, 2022

© MG2. All rights reserved. No part of this document may be reproduced in any form or by any means without permission in writing from MG2.



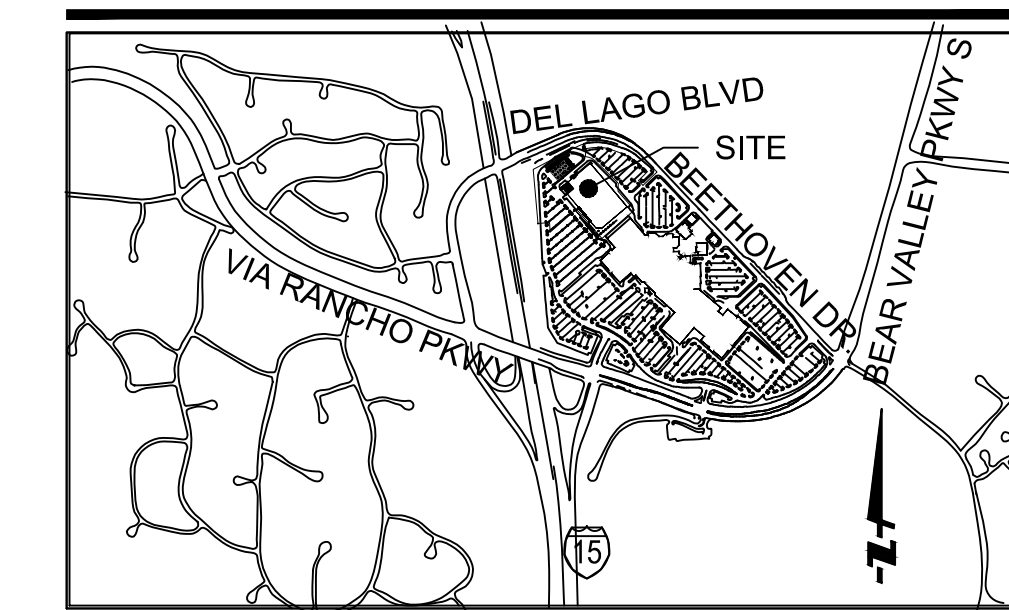
**LEGEND & ABBREVIATIONS**

- FM — FM PROPOSED SEWER FORCE MAIN, SIZE AND MATERIAL PER PLAN
- SS — SS PROPOSED SEWER LINE, SIZE PER PLAN
- SD — SD PROPOSED STORM DRAIN, SEE GRADING PLAN
- DW — DW PROPOSED WATER LINE, SIZE AND MATERIAL PER PLAN
- JT — JT PROPOSED DRY UTILITY JOINT TRENCH
- ⊙ PROPOSED SEWER MANHOLE
- ⊠ PROPOSED MODULAR WETLAND SYSTEM, SEE GRADING PLAN



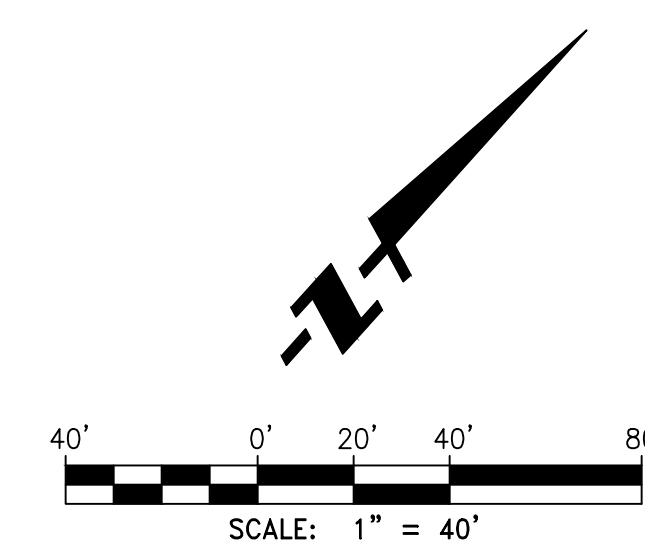
**NOTES:**  
EXISTING CONDITIONS TO BE FIELD VERIFIED.

**VICINITY MAP**



NOT TO SCALE

ESCONDIDO, CA



# FORMER SEARS REDEVELOPMENT

# CONCEPTUAL UTILITY PLAN

ESCONDIDO, CALIFORNIA

AUGUST 10, 2022

1101 Second Ave, Ste 100  
Seattle, WA 98101  
206 962 6500  
MG2.com



19-5135-01  
AUGUST 10, 2022

CONCEPTUAL  
UTILITY PLAN

MG2. All rights reserved. No part of this document may be reproduced without permission in writing from MG2.