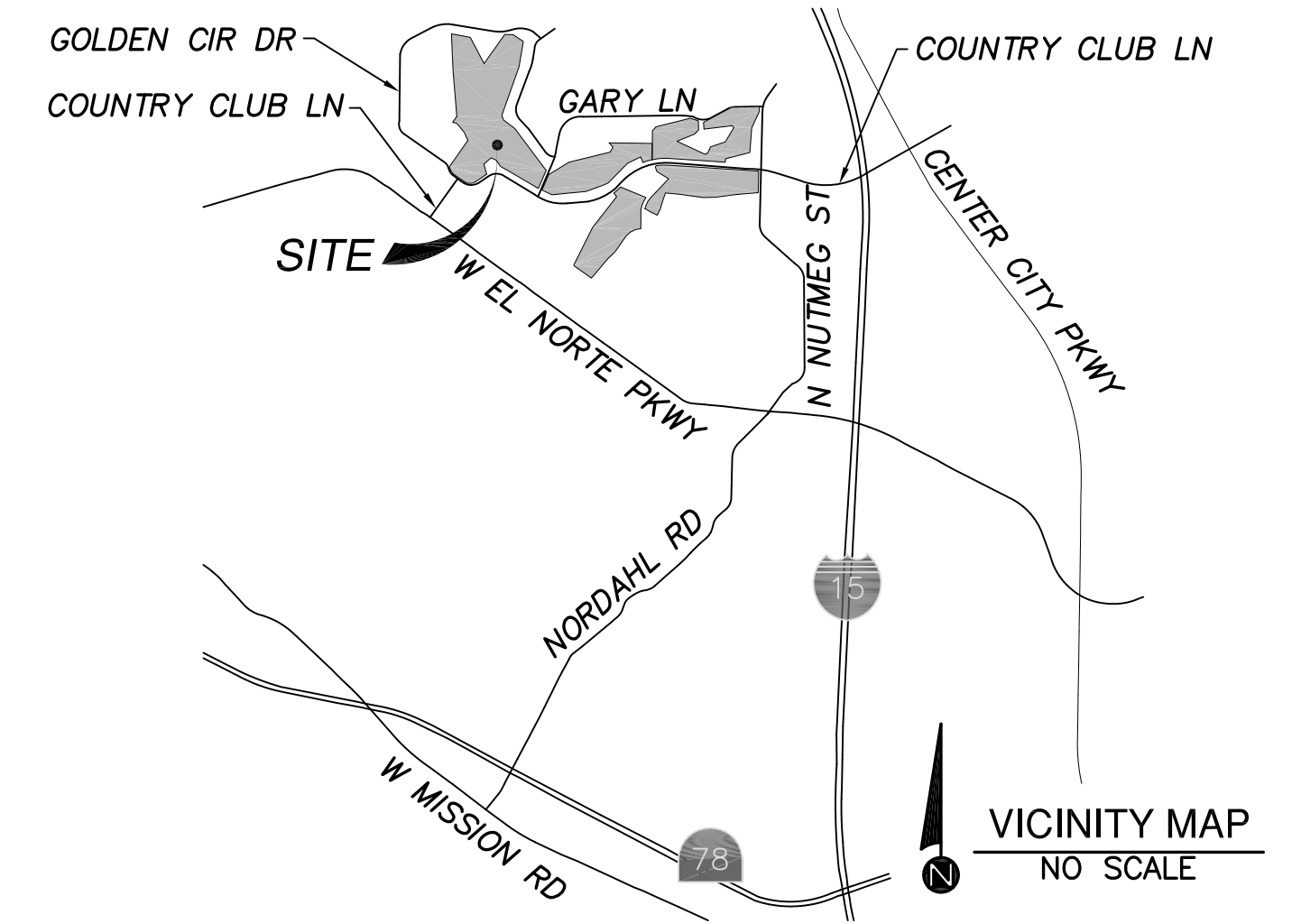
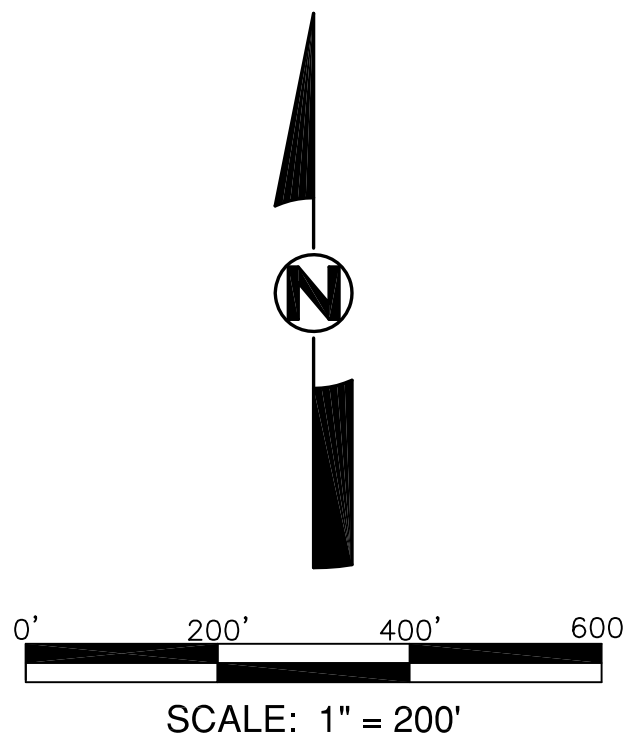


VESTING TENTATIVE MAP THE LAKES, ESCONDIDO

IN THE CITY OF ESCONDIDO, STATE OF CALIFORNIA



all ideas, designs and plans represented by this drawing are the exclusive property of Shapouri and associates, and shall not be reproduced in whole or in part without the express prior written permission of said engineers, any unauthorized reuse of these plans other than for the project and location shown is prohibited.



SHAPOURI & ASSOCIATES
PROJECT MANAGEMENT SERVICES
ENGINEERING ARCHITECTURE PLANNING
CIELO VILLAGE, 1809 CALLE AMBIENTE, SUITE 502
P.O. BOX 676221, RANCHO SANTA FE, CALIF. 92067
PHONE: (858) 756-8348 FAX: (858) 756-8344



DATE: 5/01/2015

EARTHWORK QUANTITIES	Date	By	REVISIONS	App'd	Date	BENCH MARK
CUT:						DESCRIPTION: A Standard Street Survey Monument, 2-1/2" Brass Disk Stamped "LL 4539, 1015"
FILL:						LOCATION: Intersection Of Country Club Lane & Nutmeg Street, Escondido
BALANCE:						RECORD FROM: Record From: Station 1015 of Record of Survey 14236 "City Of Escondido Survey Control"
						ELEVATION: 750.61'
						DATUM: NGVD29