

City of Escondido

IAWP Supply Reduction Implementation

FINAL

The City Of Escondido proposes to adopt the following draft IAWP supply reduction implementation. This document is comprised of four essential elements:

1. Retail Water Supply and Demand

A. Water Supply Sources

Escondido receives local water from Lake Henshaw and Lake Wohlford watersheds. Domestic, commercial (firm) and IAWP customers (non-firm) water is purchased from the San Diego County Water Authority ("SDCWA") and the Metropolitan Water District of Southern California ("MWD"). Escondido also supplied 358.0 AF (FY 06-07) of recycled water from the Hale Avenue Resource Recovery plant to its recycled customers.

B and C. Monthly Use Patterns, Imported, Local and IAWP

The attached [tables](#) supplied by the SDCWA accurately reflect the monthly use pattern for total Imported, Local and IAWP for fiscal Years ending in 2004, 2005, and 2006.

2. Uses of Agricultural Water

A. Crop Specific Data

Please see attached [spreadsheet](#) showing acreages of the various crops being cultivated in the Escondido service area.

B. Map of Areas Receiving IAWP Water

Please see the attached [map](#) reflecting parcels receiving IAWP. This map was compiled based upon data received from IAWP participants. Verification was done at each service address. Total acreage in the Escondido IAWP area is **2880 acres**.

3. Local Program Administration

Escondido will employ the following features in its local administration of the IAWP Reduction:

A. Communication Protocols

City Council Action

At the November 28, 2007 Escondido City Council meeting, the Council will adopt a resolution incorporating the IAWP specific to the City of Escondido.

Customer Outreach

With the April, 2007 court decision regarding the SWP pump operations, Escondido and our IAWP customers have started contemplating long-term strategies for dealing with potential supply shortfalls.

Formal Notification

After Council adoption of the resolution, agricultural customers will be notified by U.S. mail of the 30% reductions required beginning January 1, 2008. Each participant in the program will be provided a formal notice which will include a description of the method of implementation, the month by month water allocations for that specific customer, as well as the penalty rate structure and enforcement provisions.

We would hope that we will have final reduction numbers from our suppliers in time to provide our growers with at least 30 days to determine how they can best operate within the supply limitations.

Ongoing Monitoring

As we move toward the fall and winter of 2007, we will continue to monitor water supply conditions and when appropriate, communicate updates to our customers via US mail and through our web-site.

Assistance for the IAWP Participants

With the lead time that we have to prepare for the potential reduction, we will encourage and assist local and regional agricultural organizations, such as the San Diego County Farm Bureau and the California Avocado Commission, and others in conducting educational seminars to provide grower with technical information and suggestions for strategic approaches to successfully dealing the potential cutback. Such measures may include Stumping, fallowing, and stock reductions. Losses due to the October 2007 fires, while minimal in Escondido, may also be viable means to the 30% reduction. We will also continue to advise growers to seek assistance from the Mission Resource Conservation District, which is partially funded by the SDCWA.

Entering and Leaving the IAWP

When the City is under an actual cut or the threat of a reduction, as is the current situation, participants may not enter or leave the program.

As per the City's IAWP Certification and acknowledgement of Participation form, under normal supply conditions, a grower must give one year notice to exit the program. They will stop receiving the discount when that year concludes. However, because the reduction would logically be based on past usage, that grower will be obligated to take a future reduction as long as his/her usage is included in the base year for the reduction.

B. Retail Agency and End-User Reduction Targets

Retail agency and end-user reduction targets will be determined by the percentage of reduction required and the base measurement period utilized by MWD. These two factors will result in a monthly allocation of supply for a six month increment, which will be allocated to individual customers based upon the relative usage levels in the base year.

C. Methodologies for Administering Reduction

As has been done in the past, the City will utilize month to month water allocations provided in advance on a per customer basis, with allocations determined by the percentage reduction against the selected base year. Specific program implementation will be as follows:

▶ Once the base year has been determined by MWD, each IAWP customer will be provided a print-out of their respective monthly allocations at least one month prior to the start of the program, which is anticipated to be January, 2008.

▶ The City's billing format will be changed to reflect the allocation for the specific month and the amount of usage over and under the monthly allocation.

▶ Usage under the monthly allocation shall be deemed "usage credits" that can roll forward to offset over-usage and penalties in successive months, or rolled forward out of the first six month program into the succeeding six-month program. Credits remaining from the first period or new credits accumulated in any portion of the second six-month period cannot be rolled forward out of the first year of the program onto a third six-month period , and so on.

▶ Water usage over the monthly allocations will billed at the same penalty rate imposed by MWD on its member agencies. (Currently proposed at IWAP rate plus an additional **\$898.00/ AF penalty**.)

▶ Penalty charges to the customer for over-usage for the first **six** months of implementation will be suspended to provide customers with a period to transition into the reduction program. However penalties incurred in the first **six** months and not fully offset with adjusted usage under the allocation in the **seventh** month will be billed for the penalty balance at the end of the **seventh** month, along with any penalties incurred in the **seventh** month. If at the end of the twelve month reduction period, and the customer's base usage has dropped to or below their annual target, then any penalties paid may be applied as credits in the next billing cycle.

D. Monitoring and Verifying Reduction

▶ Accounts under the **same ownership** may be grouped into one master account to report over or under usage against the group total allocation, allowing customers to move water allocation among accounts and properties under their

ownership. Parcels leased or rented may **NOT** be grouped for purposes of determining allocations.

▶ Should an IAWP participant fail to meet the targets on a continuing basis, the City will implement a mandatory flow restriction to reduce water consumption.

▶ A monthly report reflecting the total IAWP usage reduction compliance will be produced and forwarded to the District's wholesale suppliers, MWD and the SDCWA. A similar report will be produced at the end of each six month program segment.

4. Impact on Metropolitan

There are two raw water service connections (Esc #'s 3&4) in the City of Escondido that will be affected by the IAWP Reduction Plan.

[Frequently Asked Questions](#)

Historic Member Agency Imported Use (AF)

FY 2004	Jul-03	Aug-03	Sep-03	Oct-03	Nov-03	Dec-03	Jan-04	Feb-04	Mar-04	Apr-04	May-04	Jun-04
Carlsbad M.W.D.	2,125	2,268	2,115	1,841	1,432	1,487	1,320	998	1,522	1,664	2,321	2,130
Escondido, City of	3,632	3,711	3,390	3,110	2,235	1,898	1,134	888	1,275	2,516	3,957	2,256
Fallbrook P.U.D.	2,000	2,116	1,918	1,795	1,103	1,116	1,243	695	1,229	1,453	2,057	1,960
Oceanside, City of	3,300	3,448	3,146	2,871	2,142	2,004	2,067	1,603	2,135	2,553	3,478	3,259
Olivenhain M.W.D.	2,570	2,660	2,352	2,067	1,431	1,327	1,304	989	1,494	2,243	2,679	2,576
Otay W.D.	4,072	4,259	3,829	3,558	2,913	2,711	2,502	1,827	2,527	3,136	4,098	4,147
Padre Dam M.W.D.	2,414	2,504	2,202	2,100	1,355	1,318	1,231	980	1,359	1,628	2,261	2,253
Poway, City of	1,742	1,799	1,606	1,552	1,022	885	840	728	969	1,245	1,718	1,661
Rainbow M.W.D.	3,759	4,018	3,577	3,410	2,024	1,742	2,181	1,944	1,835	1,950	3,799	3,238
Ramona M.W.D.	1,276	1,267	1,204	1,191	628	583	731	409	785	957	1,402	1,330
Rincon Del Diablo M.W.D.	1,017	1,044	935	836	533	519	535	356	559	732	1,005	981
San Diego, City of, IN	22,329	22,428	21,910	21,756	15,114	15,554	16,078	13,835	16,578	18,517	21,066	22,058
Santa Fe I.D.	1,144	1,282	1,416	1,224	691	758	755	565	747	1,111	1,258	1,492
Vallecitos W.D.	2,021	2,146	1,982	1,784	1,243	1,141	1,157	880	1,253	1,537	2,217	1,998
Valley Center M.W.D.	6,061	6,468	5,767	5,517	2,923	2,743	3,178	1,283	3,201	3,978	5,741	5,323
Vista I.D.	2,590	2,719	2,437	2,247	1,646	1,554	1,564	904	1,214	1,839	2,626	2,438
Yuima M.W.D.	469	554	593	611	210	174	135	68	216	230	525	526
Monthly Total	62,522	64,689	60,376	57,470	38,643	37,513	37,954	28,952	38,897	47,288	62,208	59,626
Cumulative Total		127,211	187,587	245,056	283,699	321,212	359,165	388,118	427,015	474,303	536,510	596,136

FY 2005	Jul-04	Aug-04	Sep-04	Oct-04	Nov-04	Dec-04	Jan-05	Feb-05	Mar-05	Apr-05	May-05	Jun-05
Carlsbad M.W.D.	2,356	2,301	2,209	1,687	1,349	1,253	1,073	853	892	2,148	2,148	2,195
Escondido, City of	3,262	3,234	3,108	2,359	1,709	1,821	1,333	1,141	1,721	1,333	1,549	2,534
Fallbrook P.U.D.	2,333	2,363	2,394	1,167	653	802	420	414	558	1,284	1,574	1,847
Oceanside, City of	3,779	3,724	3,611	2,653	1,838	1,785	1,518	1,516	1,774	2,774	3,024	3,187
Olivenhain M.W.D.	2,331	2,962	2,843	1,787	935	1,161	616	736	904	2,000	2,297	2,482
Otay W.D.	5,013	4,668	4,317	2,891	2,234	2,251	1,743	1,783	1,769	3,281	3,716	4,122
Padre Dam M.W.D.	2,534	2,505	2,384	1,634	1,012	1,113	890	787	913	1,545	1,851	2,077
Poway, City of	1,894	1,853	1,783	1,092	717	764	559	471	614	1,206	1,393	1,630
Rainbow M.W.D.	3,713	3,792	3,928	1,951	870	1,182	412	506	725	2,207	2,688	3,278
Ramona M.W.D.	1,501	1,473	1,500	869	439	471	337	277	329	900	1,039	1,227
Rincon Del Diablo M.W.D.	1,096	1,075	1,030	627	397	438	275	264	328	627	734	842
San Diego, City of, IN	24,834	24,628	23,708	18,545	16,127	15,589	12,806	10,510	9,957	13,469	13,205	20,663
Santa Fe I.D.	1,537	1,565	1,259	688	591	572	128	244	217	767	1,003	1,169
Vallecitos W.D.	2,260	2,256	2,213	1,444	1,018	1,094	778	751	902	1,620	1,850	1,965
Valley Center M.W.D.	6,223	5,973	6,053	2,872	1,183	1,812	478	659	894	3,288	4,019	4,649
Vista I.D.	2,358	2,426	2,366	1,780	1,325	1,383	1,124	1,040	1,185	1,948	2,173	2,121
Yuima M.W.D.	685	679	706	7	350	101	0	0	0	88	183	187
Monthly Total	67,708	67,474	65,411	44,052	32,744	33,591	24,489	21,951	23,681	40,483	44,444	56,174
Cumulative Total		135,182	200,593	244,644	277,388	310,979	335,469	357,420	381,101	421,584	466,028	522,202

FY 2006	Jul-05	Aug-05	Sep-05	Oct-05	Nov-05	Dec-05	Jan-06	Feb-06	Mar-06	Apr-06	May-06	Jun-06
Carlsbad M.W.D.	2,348	2,461	2,199	1,850	1,499	1,775	1,448	1,185	1,216	1,322	1,812	2,091
Escondido, City of	2,592	2,562	2,367	1,390	2,169	2,415	2,159	1,696	867	1,182	1,893	1,836
Fallbrook P.U.D.	2,228	2,314	1,988	1,509	1,471	1,442	1,141	1,080	459	773	1,580	2,028
Oceanside, City of	3,550	3,494	3,096	2,736	2,383	2,257	1,980	1,990	1,481	1,954	2,866	3,185
Olivenhain M.W.D.	2,957	2,872	2,548	1,992	1,555	1,472	1,287	1,420	680	1,250	2,017	2,512
Otay W.D.	4,643	4,709	4,212	3,778	3,120	3,101	2,711	2,689	2,024	2,574	3,637	4,229
Padre Dam M.W.D.	2,397	2,456	2,168	1,777	1,614	1,459	1,242	1,234	883	1,234	1,738	2,196
Poway, City of	1,880	1,874	1,590	1,277	1,276	1,100	1,052	1,063	578	764	1,378	1,693
Rainbow M.W.D.	3,906	4,007	3,502	2,495	2,724	2,444	1,860	1,873	585	1,007	2,697	3,360
Ramona M.W.D.	1,492	1,583	1,334	922	830	742	744	785	366	366	1,055	1,508
Rincon Del Diablo M.W.D.	1,014	1,027	888	691	668	596	665	546	319	379	739	839
San Diego, City of, IN	23,303	23,636	22,124	19,552	12,538	11,709	9,532	11,351	9,682	15,207	16,749	21,557
Santa Fe I.D.	1,231	1,351	1,472	929	883	701	537	436	89	228	749	1,271
Vallecitos W.D.	2,326	2,347	2,098	1,683	1,605	1,481	1,253	1,171	823	1,078	1,672	2,037
Valley Center M.W.D.	5,837	5,836	5,302	3,708	3,951	3,643	2,745	2,465	625	1,513	3,804	5,339
Vista I.D.	1,392	1,321	1,394	1,470	1,939	1,260	910	404	369	536	1,022	1,476
Yuima M.W.D.	528	623	511	290	314	235	77	115	0	0	179	462
Monthly Total	63,623	64,472	58,794	48,050	40,536	37,829	31,343	31,505	21,045	31,366	45,586	57,619
Cumulative Total		128,094	186,888	234,937	275,474	313,303	344,646	376,150	397,195	428,562	474,147	531,766

MWD Interim Agricultural Water Program Survey

Ag Product	Parcel #	Acreage	Notes
Oranges	241-170-06-00	2.81	
Avocado	241-080-35-00	15.5	
Avocado/Citrus	240-200-22-00	2.04	
Citrus/Avo	241-040-32-00	5.82	
Avocado	239-181-10-00	1.5	
Avocado	225-66-162-00	2.65	
Fruit	237-290-07-00	2.12	
Avocado/Floral/Citrus	237-030-37-00	3.07	
Avocado/Citrus	237-290-16-00	2.24	
Avocado	241-080-02-00	6.79	
Avocado	241-080-16-00	0.87	
Avocado	241-080-45-00	55.23	
Avocado	241-150-08-00	5.02	
Avocado/Kumquat	237-161-02-00	2.23	
Avocado	240-111-17-00	19	
Avocado	240-110-75-00	153	
Avocado	240-111-22-00	0	
Avocado	240-110-50-00	26.51	
Avocado	240-110-51-00	22.85	
Avocado	240-111-51-00	75.83	
Avocado	240-111-53-00	12.8	
Avocado	240-111-59-00	9.77	
Avocado	240-111-60-00	0	
Avocado	240-111-58-00	9.64	
Avocado	240-241-06-00	34.17	
Avocado	240-241-08-00	28.7	
Avocado	240-110-25-00	98	
Avocado/Citrus	225-020-14-00	5.78	
Avocado/Citrus	225-020-15-00	0.83	
Avocado	234-040-02-00	3.32	
Avocado	237-030-36-00	2.71	
Citrus	240-200-19-00	11.53	
Avocado	225-67-080-00	1.63	
Citrus	237-030-38-00	3.32	
Avocado/Citrus	234-231-01-00	10.28	
Avocado/Citrus	234-231-81-00	1.98	
Avocado/Citrus	234-231-82-00	2	
Avocado/Flowers	240-111-10-00	16.38	
Avocado	237-100-17-00	11.17	
Avocado	240-240-07-00	6.24	
Avocado/Citrus	237-290-05-00	2.3	
Avocado	241-010-21-00	2.08	
Flowers	225-480-28-00	6.73	
Flowers	225-480-29-00	5.03	
Flowers	225-480-30-00	5.03	
Flowers	225-480-35-00	3.3	
Nursery	239-350-04-00	1.62	
Avocado/Citrus	224-100-27-00	9.83	
Avocado/Citrus	224-100-34-00	5.52	
Avocado/Citrus	224-100-35-00	20.45	
Avocado/Citrus	227-430-15-00	0.9	
Avocado/Citrus	227-430-20-00	22.51	

MWD Interim Agricultural Water Program Survey

Ag Product	Parcel #	Acreage	Notes
Avocado/Citrus	227-430-21-00	1.41	
Avocado	241-130-07-00	3.19	
Avocado/Citrus	236-322-16-00	1.71	
Avocado	225-662-03-00	2.87	
Avocado/Citrus	238-120-52-00	4.87	
Avocado	238-151-10-00	2.96	
Avocado	238-151-11-00	1.85	
Avocado	239-020-07-00	2.87	
Community Garden	228-073-14-00	1.5	
Community Garden	228-073-16-00	1.5	
Avocado/Citrus	224-100-11-00	9.21	
Avocado/Citrus	224-100-33-00	3	
Avocado/Citrus	224-100-40-00	8.38	
Avocado/Citrus	224-100-43-00	5.38	
Avocado/Citrus	224-100-45-00	3.01	
Avocado/Citrus	224-100-46-00	9.73	
Avocado/Citrus	224-100-47-00	4.13	
Avocado/Citrus	225-010-29-00	14.33	
Avocado/Citrus	225-010-30-00	2.11	
Avocado/Citrus	225-010-31-00	0	
Avocado/Citrus	225-010-32-00	3.56	
Avocado/Citrus	187-351-01-00	33.77	
Avocado/Citrus	187-351-02-00	2.36	
Avocado/Citrus	187-351-03-00	2.27	
Avocado/Citrus	187-351-04-00	1.99	
Avocado/Citrus	187-351-05-00	0.83	
Avocado/Citrus	187-351-06-00	7.15	
Avocado/Citrus	225-010-36-00	25.26	
Avocado	237-141-23-00	2.03	
Avocado/Citrus	241-180-03-00	6.93	
Avocado/Poultry	234-430-48-00	2.04	
Avocado/Citrus	234-020-10-00	1.47	
Avocado/Citrus	237-160-06-00	9.79	
Palms/Plants	234-430-45-00	1.35	
Avocado	238-281-23-00	1.34	
Avocado/Citrus	238-420-31-00	2.17	
Avocado	234-411-27-00	4.97	
Avocado	240-190-10-00	4.35	
Avocado	241-040-33-00	1.29	
Citrus	239-350-54-00	1.22	
Citrus	239-350-55-00	1.71	
Avocado/Citrus	237-160-26-00	2.07	
Avocado	241-160-04-00	10.52	
Avocado	241-161-01-00	6.37	
Citrus	239-340-16-00	1.9	
Plants	234-430-44-00	3.22	
Avocado	237-100-49-00	5.21	
Avocado	241-010-26-00	4.74	
Avocado	241-010-31-00	3.83	
Avocado	241-010-33-00	3.68	
Avocado/Citrus	241-010-03-00	0.98	
Avocado/Citrus	241-010-29-00	41.19	

MWD Interim Agricultural Water Program Survey

Ag Product	Parcel #	Acreage	Notes
Avocado/Citrus	241-010-30-00	1.28	
Avocado/Citrus	241-010-32-00	1.44	
Avocado/Citrus	234-040-41-00	2.06	
Avocado/Citrus	241-041-04-00	19.96	
Avocado/Citrus	241-021-02-00	38.48	
Avocado	240-240-14-00	3.69	
Avocado	240-241-02-00	4.92	
Avocado	240-510-43-00	0	
Avocado	241-161-02-00	6.4	
Avocado/Citrus	239-181-11-00	1.4	
Citrus	237-290-06-00	2.4	
Avocado	225-662-01-00	6.78	
Citrus	239-350-38-00	1.98	
Avocado	241-160-11-00	2.95	
Avocado	241-161-06-00	1.37	
Citrus	234-220-31-00	2	
Avocado	241-040-44-00	2.2	
Avocado/Citrus	241-180-02-00	7.61	
Avocado	241-180-17-00	9.27	
Avocado	234-180-51-00	1.38	
Avocado	233-622-09-00		
Avocado	233-622-10-00	0.96	
Avocado	233-623-14-00	0.65	
Avocado	234-180-21-00	0.56	
Avocado	234-180-46-00		
Avocado/Citrus	240-220-19-00	1.84	
Avocado/Citrus	225-040-68-00	2.24	
Avocado/Citrus	225-041-02-00	0.84	
Avocado/Citrus	225-041-09-00	60.6	
Avocado	241-010-07-00	12.06	
Avocado	241-010-16-00	8.91	
Avocado/Citrus	225-040-69-00		
Avocado/Citrus	225-041-03-00	7.08	
Avocado/Citrus	225-041-04-00	3.02	
Avocado/Citrus	225-041-06-00		
Avocado/Citrus	225-041-07-00		
Avocado/Citrus	225-270-36-00		
Oranges	237-290-04-00	2.27	
Avocado/Citrus	227-010-60-00	2.18	
Vegs/Citrus/Nuts	234-440-02-00	5.05	
Avocado/Citrus	234-040-36-00	36.87	
Avocado/Citrus	234-040-40-00	30.32	
Avocado/Citrus	234-141-08-00	4.83	
Avocado/Citrus	234-141-09-00	4.83	
Avocado/Citrus	234-142-01-00	4.8	
Avocado/Citrus	234-142-02-00	23.5	
Avocado/Citrus	234-260-01-00		
Avocado/Citrus	241-040-12-00	1.7	
Avocado/Citrus	241-041-16-00	18.65	
Avocado/Citrus	241-041-18-00	9.58	
Avocado/Citrus	239-030-04-00	1.38	
Avocado/Citrus/Fruit	237-143-06-00	5.69	

MWD Interim Agricultural Water Program Survey

Ag Product	Parcel #	Acreage	Notes
Avocado/Citrus	237-030-55-00	1.27	
Macadamia Nuts	240-210-06-00	3.83	
Avocado/Citrus	235-204-11-00	4.7	
Avocado	241-293-01-00	69.33	
Avocado	241-293-03-00	14.07	
Avocado	242-020-56-00	17.89	
Citrus	237-150-42-00	2	
Avocado/Citrus	227-420-11-00	6.98	
Citrus/Horses	237-081-48-00	8.45	
Avocado	237-290-14-00	2.22	
Avocado	238-240-41-00	1.7	
Avocado	234-420-07-00	11.48	
Avocado/Citrus	239-270-21-00	1.42	
Eucalyptus	237-090-61-00	2.34	
Avocado/Nut	239-330-31-00	1.26	
Avocado/Citrus	233-612-13-00	1.4	
Avocado/Horses	240-100-84-00	15.01	
Avocado	190-080-08-00	2.44	
Avocado	190-080-11-00	43.14	
Avocado	190-080-27-00	34.65	
Avocado	241-020-10-00	23.55	
Avocado	241-020-11-00	1.25	
Avocado/Flowers	240-010-38-00	3.94	
Avocado/Citrus/Nuts	234-220-32-00	1.87	
Flowers	225-480-14-00	3.45	
Avocado	240-230-34-00	29.15	
Avocado	240-230-35-00	0.99	
Citrus	237-100-28-00	1.03	
Citrus	237-100-29-00	1.28	
Citrus	237-100-30-00	1.38	
Avocado	241-180-13-00	1.11	
Avocado	241-180-08-00	1.1	
Avocado	227-320-23-00	7.63	
Avocado	241-021-03-00	2.73	
Avocado/Citrus	227-631-07-00	1.28	
Avocado/Citrus	240-230-28-00	2.46	
Avocado/Citrus	240-230-29-00	2.53	
Avocado/Citrus	240-230-30-00	8.37	
Avocado/Citrus	240-230-31-00	7.7	
Avocado	224-100-12-00	40	
Avocado	224-100-60-00	5.22	
Avocado	225-010-08-00	80	
Avocado	225-010-19-00	8.26	
Avocado/Citrus	225-010-25-00	39.52	
Avocado/Citrus	224-100-57-00	11.43	
Avocado/Citrus	224-100-58-00	55.4	
Avocado/Citrus	224-100-59-00	37.9	
Avocado/Citrus	225-010-26-00	31.62	
Avocado/Citrus	240-230-21-00	3.27	
Avocado/Citrus	235-110-22-00	8.86	
Avocado	240-190-61-00	14.37	
Limes	240-190-35-00	1.29	

MWD Interim Agricultural Water Program Survey

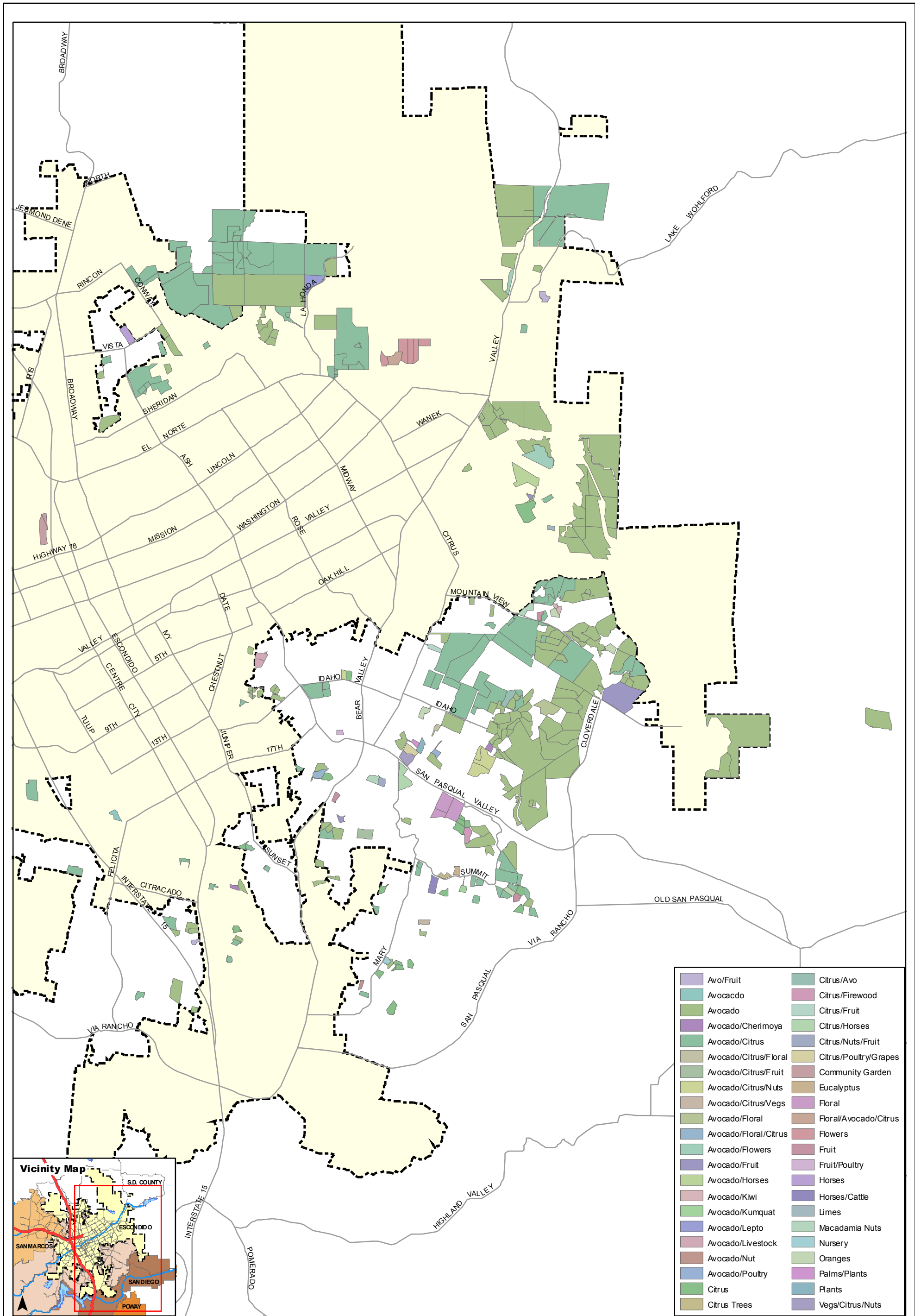
Ag Product	Parcel #	Acreage	Notes
Avocado/Citrus/Floral	234-420-26-00	1.59	
Avocado/Kiwi	241-160-02-00	1.37	
Avocado/Kiwi	240-220-10-00	0.7	
Fruit	237-142-53-00	1.98	
Horses	224-142-11-00	4.68	
Avocado/Cherimoya	234-260-66-00	1.97	
Avocado	241-140-09-00	2.17	
Avocado	241-140-10-00	1.5	
Avocado	241-120-26-00	10.65	
Avocado	241-120-27-00	12.48	
Avocado	241-120-28-00	7.86	
Avocado	241-120-29-00	9.06	
Avocado	241-120-20-00	13.11	
Avocado	241-120-21-00	12.95	
Avocado	241-120-22-00	24.84	
Avocado	241-120-23-00	12.36	
Avocado	234-260-50-00	2.21	
Citrus Trees	237-090-78-00	2	
Avocado	237-141-04-00	2.22	
Citrus/Nuts/Fruit	237-070-65-00	1.99	
Avocado/Citrus	241-040-01-00	1.56	
Citrus	237-090-22-00	4.44	
Avocado	241-020-009-00	8.49	
Avo/Fruit	240-011-09-00	3.13	
Citrus	237-260-07-00	1.87	
Avocado/Citrus	237-150-52-00	1	
Avocado/Citrus	237-150-53-00	1.88	
Avocado	241-180-10-00	9.07	
Oranges	234-410-16-00	2.42	
Avocado/Citrus	237-160-43-00	8.84	
Avocado	234-022-17-00	1.9	
Citrus/Firewood	237-100-31-00	3.86	
Fruit	240-220-32-00	2.04	
Avocado/Citrus	237-141-25-00	4.55	
Avocado/Citrus	237-290-03-00	2.13	
Avocado	240-010-33-00	11.2	
Avocado	227-010-44-00	1.88	
Avocado	234-260-42-00	2.11	
Avocado	234-260-43-00	2.05	
Avocado	241-040-23-00	4.34	
Avocado	241-040-24-00	0	
Avocado	241-040-25-00	4.13	
Avocado	241-121-03-00	3.31	
Avocado	241-130-09-00	3.82	
Avocado	241-130-10-00	2.79	
Avocado	241-130-11-00	1.32	
Avocado	241-130-20-00	3.02	
Avocado/Citrus	239-330-40-00	1.76	
Oranges	240-220-29-00	2.36	
Horses/Cattle	237-150-37-00	5.15	
Avocado	239-290-40-00	1.48	
Avocado/Citrus	237-290-02-00	2.14	

MWD Interim Agricultural Water Program Survey

Ag Product	Parcel #	Acreage	Notes
Avocado	240-010-39-00	8.37	
Avocado	241-040-46-00	4.38	
Avocado	240-230-32-00	3.23	
Avocado	241-081-01-00	25.86	
Macadamia Nuts	237-070-51-00	2.67	
Avocado	239-350-49-00	1.33	
Avocado	241-170-09-00	12	
Avocado	241-170-09-00	12	
Avocado/Cherimoya	238-142-46-00	1.31	
Citrus/Fruit	234-040-39-00	3	
Avocado/Citrus	237-290-11-00	2.2	
Avocado/Citrus	224-143-30-00	7.15	
Avocado/Citrus	240-020-26-00	2.04	
Avocado	234-430-49-00	4.62	
Avocado	239-030-52-00	1.22	
Avocado/Citrus	224-143-33-00	4.98	
Avocado/Citrus	224-143-50-00	2.91	
Avo/Fruit	238-240-49-00	1.27	
Avocado/Citrus/Nuts	234-260-76-00	2.17	
Avocado/Citrus/Nuts	234-260-77-00	9.67	
Avocado/Citrus/Nuts	234-262-11-00	7.24	
Avocado/Citrus	237-161-04-00	1.88	
Avocado	237-081-31-00	2.23	
Avocado	238-281-01-00	9.09	
Avocado	236-510-43-00	2.14	
Citrus	239-181-07-00	1.63	
Avocado/Floral	241-130-21-00	10.05	
Avocado/Fruit	241-180-11-00	30.23	
Avocado	241-180-14-00	3.65	
Avocado/Lepto	225-010-38-00	6.73	
Floral/Avocado/Citrus	225-480-23-00	5.77	
Avocado	237-090-47-00	2.5	
Avocado	225-710-23-00	13.17	
Avocado	231-260-37-00	2.18	
Avocado/Livestock	234-152-27-00	0	
Avocado/Livestock	234-152-28-00	3.14	
Avocado/Livestock	234-152-29-00	2.61	
Avocado	231-140-13-00	1.49	
Avocado	231-140-26-00	2.05	
Avocado	231-140-27-00	8.69	
Avocado	231-140-29-00	9.52	
Avocado	237-141-20-00	4.09	
Avocado/Citrus	239-180-16-00	1.28	
Avocado	231-140-20-00	4.24	
Avocado	237-141-01-00	2.2	
Avocado	234-022-32-00	1.25	
Avocado	225-662-02-00	2.18	
Avocado/Citrus	237-161-22-00	2.13	
Citrus	239-360-27-00	3.68	
Avocado/Citrus	238-141-16-00	1.34	
Avocado	241-180-16-00	9.24	
Avocado	241-130-06-00	6.03	



MWD Interim Agricultural Water Program Survey

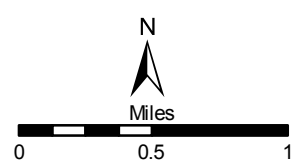
Ag Product	Parcel #	Acreage	Notes
Citrus/Poultry/Grapes	234-440-01-00	4.03	
Fruit/Poultry	234-451-11-00	1.34	
Avocado	241-040-18-00	6.75	
Avocado/Citrus	227-101-35-00	2.74	
Avocado/Fruit	240-100-77-00	1.22	
Avocado	233-490-42-00	1.56	
Floral	237-090-51-00	3.67	
Floral	237-100-38-00	8.9	
Floral	237-100-39-00	10.1	
Avocado	227-430-27-00	1.85	
Avocado/Citrus	237-161-13-00	2	
Avocado/Citrus	240-220-33-00	0.76	
Avocado/Citrus	240-220-40-00	3.77	
Avocado	239-130-23-00	1.27	
Avocado/Citrus	241-040-31-00	3.34	
Avocado	234-160-37-00	1.02	
Avocado	234-160-38-00	1.19	
Avocado	234-160-44-00	2.1	
Avocado	234-022-16-00	1.9	
Avocado	227-101-36-00	3.54	
Avocado	227-101-37-00	6.28	
Citrus	236-322-21-00	1.3	
Avocado	239-051-11-00	1.85	
Citrus	237-290-09-00	2.1	
Avocado/Citrus	236-380-17-00	1.38	
Avocado/Citrus	236-380-54-00	0	
Avocado/Fruit	237-142-17-00	1.45	
Avocado	241-040-30-00	3.2	
Avocado/Citrus	190-080-18-00	36.27	
Avocado/Citrus	190-080-20-00	94.61	
Avocado	241-140-02-00	51.2	
Avocado	240-390-13-00	1.73	
Avocado/Citrus/Vegs	239-270-25-00	2.04	
Commercial			
	Total Ag Acreage	2879.92	



J:\Projects\PUBWORKS\Water\Walker\0807\ag.mxd

Escondido Agriculture Parcels/Crop Use

 Major Roads
 City Boundary



Every reasonable effort has been made to ensure the accuracy of this map. However, by accepting this material, you agree that the City of Escondido assumes no liability of any kind arising from the use of this map. THIS MAP IS PROVIDED WITHOUT WARRANTY OF ANY KIND, either expressed or implied, including but not limited to time, money or goodwill arising from the use, operation or modification of the map.

Portions of this DERIVED PRODUCT contain geographic information copyrighted by SanGIS. All rights reserved.



San Diego County Water Authority
Interim Agricultural Water Program Regional Reduction Plan
Frequently Asked Questions
10/29/07

The purpose of this document is to provide additional information and clarification regarding the Metropolitan Water District of Southern California Interim Agricultural Water Program (IAWP) guidelines and the Water Authority's IAWP Regional Reduction Plan.

1. What is the IAWP?

The IAWP is a water management program sponsored by the Metropolitan Water District of Southern California (Metropolitan). In exchange for a rate discount from Metropolitan, IAWP customers are required to reduce their IAWP demands during a supply shortage. Under the program, Metropolitan can reduce IAWP deliveries by up to 30 percent **prior** to implementing any mandatory cutbacks to its municipal and industrial customers. Cutbacks to IAWP deliveries may exceed 30 percent if Metropolitan imposes mandatory reductions to the municipal and industrial sector.

2. Why are reductions to IAWP deliveries needed?

A combination of historic dry conditions throughout California and uncertainties regarding the availability of State Water Project supplies in 2008, prompted Metropolitan to implement water management strategies identified in its Water Surplus and Drought Management (WSDM) Plan. One of the water management actions listed in the WSDM Plan is a reduction in IAWP deliveries.

3. Who is subject to a cutback?

- Customers that received the IAWP discount rate before December 31, 2006, and continued to receive the IAWP discount after December 31, 2006 are subject to cutback.
- Customers that received the IAWP discount rate before December 31, 2006, but stopped receiving the IAWP discount by December 31, 2006 are not subject to cutback.
- Customers that entered the IAWP and began taking the rate discount after December 31, 2006 should contact their local retail water service provider regarding its policy and requirements.

4. What level of IAWP reduction is anticipated for calendar year 2008?

Metropolitan has called for a 30 percent reduction in IAWP deliveries beginning January 1, 2008. The cutback will remain in effect as long as water supply conditions dictate. If water supply conditions worsen and cutbacks to the municipal and industrial sector are implemented, the cutback to IAWP customers could increase beyond 30 percent.

5. How much IAWP water will the Water Authority receive?

Under the required 30 percent IAWP reduction, the Water Authority will receive approximately 70,300 acre-feet of IAWP water (100,451 acre-feet x 70 percent) for calendar year 2008. This supply will be allocated amongst the Water Authority member agencies that receive discounted IAWP water.

6. How will the Water Authority distribute its IAWP allocation to its member agencies?

The Water Authority will allocate its estimated 70,300 acre-feet of IAWP supply to its member agencies based on each agency's fiscal year 2007 (July 2006 through June 2007) IAWP water demand. Utilizing fiscal year 2007 is consistent with Metropolitan IAWP guidelines and provides the best estimate of recent IAWP use, anticipating continued dry-year conditions in 2008. For information regarding retail customer IAWP allocations, please contact your local retail water service provider.

7. Will the IAWP discount rate be available during a reduction?

IAWP deliveries certified through the Metropolitan program during a cutback will be eligible for the IAWP discount rate - up to a member agencies' annual allocation limit. For information regarding retail customer IAWP discount rate, please contact your local retail water service provider.

8. Will penalties be assessed?

Yes. Consistent with Metropolitan IAWP Reduction Guidelines, the Water Authority will assess a penalty rate to its member agencies for IAWP deliveries in excess of a member agency's allocation limit. For information regarding IAWP retail customer penalty rates, please contact your local retail water service provider.

9. How will IAWP reductions be measured and tracked?

The Water Authority will track its member agencies' IAWP deliveries through the monthly certification and billing process. For information regarding IAWP retail customer reduction performance measurement and tracking, please contact your local retail water service provider.

City Of Escondido
IAWP
Frequently Asked Questions
12-18-07

1. Can I combine accounts to meet the 30% reduction?

Yes, but only accounts under the same ownership. Leased accounts may NOT be combined. You will need to notify the City in writing that you wish to combine accounts. Please list the accounts and sign the request. Send the request to Richard Walker, City of Escondido, 201 N. Broadway, Escondido, Ca., 92025

2. When will penalties be assessed?

After the first six months have passed, and each month thereafter you are over your monthly target. Penalties will be assessed at the MWD rate of \$898.00/AF (\$2.75/1000 gal) in addition to the regular Ag rate. If you get back to your target by the end of the year, any penalties collected will be returned as a credit on future bills.

3. Will there be left-over water due to some Ag users closing or cutting back more than 30%?

Maybe. We will assess the program in May or June to see if we are going to be under our collective agency target, and then reallocate any excess water on a case-by-case basis.

4. Can I get out of the IAWP?

Yes. But we must receive the request in writing, and as per the original contract; you will be required to stay in for one year. So, to get out by January 2009, we must receive your request by December 31, 2007. After the one year wait, you will be put in the regular M&I (Municipal and Industrial) rate with no usage restrictions (currently).

5. How can I get an increase to my allocation?

You can't. Escondido has been allocated a defined amount of Ag water and there is no extra water to give anyone. Your allocation is based on the meter reads taken for your account during the base period and cannot be changed. However, as per #3 above there may be extra water later in the year.

6. How will I know if I am over or under?

Each monthly statement will include a running total of your usage and will indicate if you are over or under your target. In addition, the subsequent months allocations will be adjusted up or down to reflect your remaining water balance.

7. When will flow restrictors be used?

It is important to remember we are all in this together. And to that end, it is the responsibility of each Ag user to do their part in meeting the 30% reduction. Individual users that are continually over using will have flow restrictors placed on their meters at the direction of the Utilities Manager.

8. Will these cutbacks continue in 2009?

That is up to the Metropolitan Water District. It will mostly depend on state-wide water storage and anticipated demand. MWD will review the program and announce if there is a renewal in fall of 2008.