


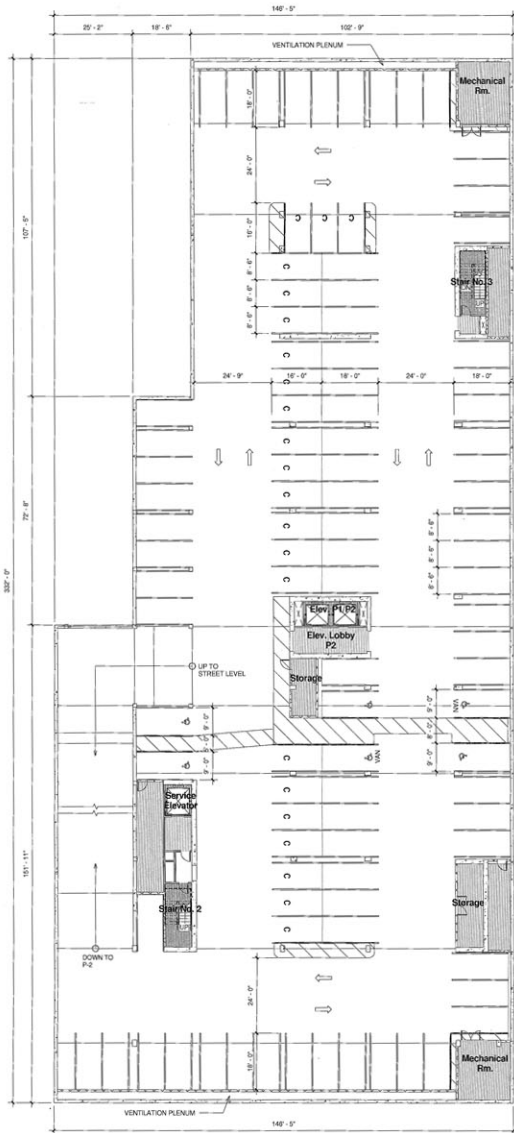





Legend

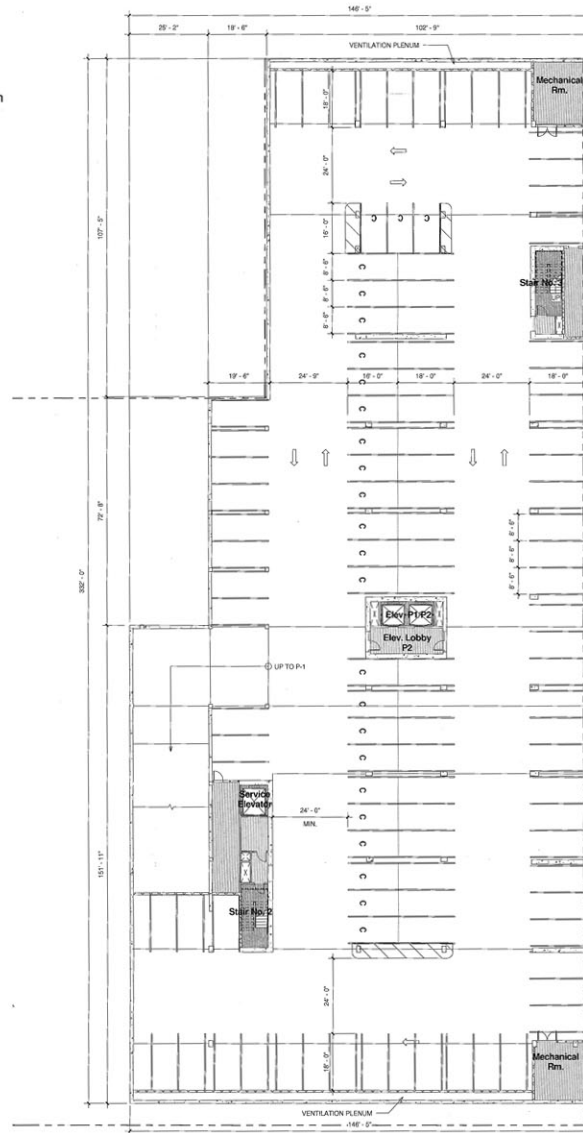
-  Corridor/ BOH
-  Public / Circulation
-  Stair & Elevator



1 Level P-1 Garage Floor Plan
1/16" = 1'-0"

Legend

-  Corridor/ BOH
-  Public / Circulation
-  Stair & Elevator



2 Level P-2 Garage Floor Plan
1/16" = 1'-0"

GENERAL NOTES

1. ALL PARKING SPACES SHOWN SHALL BE DOUBLE STRIPED PER CITY STANDARD AND BE OF MINIMUM DIMENSIONS INDICATED IN THE SUMMARY BELOW.
2. ONE ADDITIONAL PARKING SPACE FOR DISABLED PERSONS WILL BE LOCATED AT GRADE IN FRONT OF THE HOTEL. SEE GROUND FLOOR PLAN, SHEET A-6.
3. VAN ACCESSIBLE SPACES SHALL BE CLEARLY MARKED AND SHALL COMPLY WITH CHAPTER 2-71, PART 2 OF TITLE 24 OF THE CALIFORNIA BUILDING CODE.
4. THE FLOOR SLOPE AT DISABLED ACCESS PARKING SPACES AND ACCESSIBLE PATHS OF TRAVEL TO ELEVATORS SHALL NOT EXCEED 2%. BOTH LEVELS OF THE PARKING GARAGE WILL BE MECHANICALLY VENTILATED AS REQUIRED BY CODE. DISCHARGED AIR FROM THE VENTILATION SYSTEM WILL BE LOCATED NOT LESS THAN TEN (10) FEET FROM ANY BUILDING AND NOT LESS THAN TEN (10) FEET ABOVE GRADE, TO THE SATISFACTION OF THE BUILDING AND PLANNING DEPARTMENTS.
5. A SECURITY SURVEILLANCE CAMERA SYSTEM WILL BE INSTALLED AT BOTH LEVELS OF THE PARKING GARAGE TO THE SATISFACTION OF THE CITY OF ESCONDIDO POLICE DEPARTMENT.

GARAGE PARKING SUMMARY

LEVEL P-1	
STANDARD (8'-6" X 18'-0")	72 SPACES (22%)
COMPACT (8'-6" X 16'-0")	22 SPACES (22%)
ACCESSIBLE (14'-0" X 16'-0")	4 SPACES
VAN ACCESSIBLE (17'-0" X 16'-0")	2 SPACES
TANDEM	0 SPACES
TOTAL:	100 SPACES
LEVEL P-2	
STANDARD (8'-6" X 18'-0")	85 SPACES
COMPACT (8'-6" X 16'-0")	25 SPACES (23%)
TANDEM	0 SPACES
TOTAL:	110 SPACES
GRAND TOTAL:	210 SPACES

