



1 SOUTH ELEVATION  
 3/32" = 1'-0"



2 EAST ELEVATION  
 3/32" = 1'-0"



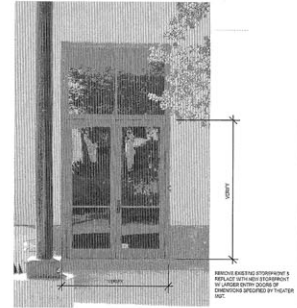
10-28-2009

**Escondido Marriott Hotel & Conference Center**  
 by: *Escondido Development, LLC*





1 NORTH ELEVATION  
3/32" = 1'-0"



THEATER - EAST ELEVATION  
NOT TO SCALE



2 WEST ELEVATION  
3/32" = 1'-0"



10-28-2009